

## **Copyright**

This manual and any accompanying software and firmware are copyrighted. No parts of this publication may be reproduced, stored in a retrieval system, or transmitted, in any form or by any means, electronic, mechanical, photocopy, recording, or otherwise, without prior written consent except for copies retained by the purchaser for backup purposes.

## **Trademarks**

Product and company names mentioned in this manual are for identification purposes only and may be trademarks of their respective companies.

Microsoft and Windows are registered trademarks of Microsoft Corporation.

ICA, MetaFrame, WinFrame are registered trademarks of Citrix Systems, Inc.

## **Disclaimer**

The information described in this manual is intended for instructional purposes only. The Vendor reserves the right to revise this manual and all accompany software, firmware without obligation to notify any person or organization of the revision or change. The Vendor accepts no responsibility or liability for errors or misleading information that may be contained in this manual.

## **Radio Frequency Interference Statement**

### **FCC Statement**

This equipment has been tested and found to comply with the limits for a Class B digital device, pursuant to Part 15 of FCC Rules. These limits are designed to provide reasonable protection against harmful interference when the equipment is operated in a residential installation. This equipment generates, uses, and can radiate radio frequency energy. If it is not installed and used in accordance with the instructions, may cause harmful interference to radio communications. However, there is no guarantee that interference will not occur in a particular installation. If this equipment does cause harmful interference to radio or television reception, which can be determined by turning the equipment off and on, the user is encouraged to try to correct the interference by one or more of the following measures:

Reorient or relocate the receiving antenna.

Increase the separation between the equipment and receiver.

Connect the equipment into an outlet on a circuit different from that to which the receiver is connected.

Consult the dealer or an experienced radio TV technician for help.

**Notice:**

The changes or modifications not expressly approved by the party responsible for compliance could void the user's authority to operate the equipment.

**IEC/EN Notice** \_\_\_\_\_

This product conforms to the requirement of IEC950 and EN60950.

This product conforms to requirements of EN55022 for Class A equipment or EN55022 for Class B equipment.

# End User License Agreement ("EULA") for MICROSOFT WINDOWS CE OPERATING SYSTEM FOR WINDOWS-BASED TERMINAL DEVICES VERSION 1.0

---

**IMPORTANT-READ CAREFULLY:** This End User License Agreement ("EULA") is a legal agreement between you (either an individual or a single entity) and the manufacturer ("Manufacturer") of the special purpose computing device ("SYSTEM") you acquired which includes certain Microsoft software product(s) installed on the SYSTEM and/or included in the SYSTEM package ("SOFTWARE"). The SOFTWARE includes computer software, the associated media, any printed materials, and any "online" or electronic documentation. By installing, copying, downloading, or otherwise using the SOFTWARE, you agree to be bound by the terms of this EULA. If you do not agree to the terms of this EULA, Manufacturer and Microsoft Licensing, Inc. ("MS") are unwilling to license the SOFTWARE to you. In such event, you may not use or copy the SOFTWARE, and you should promptly contact Manufacturer for instructions on return of the unused product(s) for a refund.

---

## SOFTWARE LICENSE

The SOFTWARE is protected by copyright laws and international copyright treaties, as well as other intellectual property laws and treaties. The SOFTWARE is licensed, not sold.

**GRANT OF LICENSE.** SOFTWARE includes software already installed on the SYSTEM ("SYSTEM Software") and, if included in the (Desktop Software").

### **This EULA grants you the following rights to the SOFTWARE:**

- **SYSTEM Software.** You may use the SYSTEM Software only as installed in the SYSTEM.
- **Desktop Software.** Desktop Software might not be included with your SYSTEM. If Desktop Software is included with your SYSTEM, you may install and use the component(s) of the Desktop Software in accordance with the terms of the end user license agreement provided with such component(s). In the absence of the a separate end user license agreement for particular components(s) of the Desktop Software, you may install and use only one (1) copy of such component(s) on a single computer with which you use the SYSTEM.
- **Use of Windows CE Operating System for Windows-Based Terminal Devices with Microsoft Windows NT Server, Terminal Sever Edition.** If the SOFTWARE is Windows CE operation system for Windows-Based Terminal devices, the following special provisions apply. In order to use the SYSTEM in connection with Windows NT Server, Terminal Server Edition, you must possess (1) a Client Access License for Windows NT Server, Terminal Server Edition and (2) an end user license for Windows NT Workstation or an end user license agreement for Windows NT Workstation for Windows-Based Terminal Devices (please refer to the end user license agreement for Windows NT Server, Terminal Sever Edition for additional information). Manufacturer may have included a Certificate of Authenticity for Windows NT Workstation for Windows-Based Terminal Devices with the SYSTEM. In that case, this EULA constitutes an end user license

for the version of Windows NT Workstation for Window-Based Terminal Devices indicated on such Certificate of Authenticity.

- **Back-up Copy.** If Manufacturer has not included a back-up copy of the SYSTEM Software with the SYSTEM, you may make a single back-up copy of the SYSTEM Software. You may use the back-up copy solely for archival purposes.

## **DESCRIPTION OF OTHER RIGHTS AND LIMITATIONS.**

- **Speech/Handwriting Recognition.** If the SYSTEM Software includes speech and/or handwriting recognition component(s), you should understand that speech and handwriting recognition are inherently statistical processes; that recognition errors are inherent in the processes; that it is your responsibility to provide for handling such errors and to monitor the recognition processes and correct any errors. Neither manufacturer nor its suppliers shall be liable for any damages arising out of errors in the speech and handwriting recognition processes.

- **Limitations on Reverse Engineering, Recompilation and Disassembly.** You may not reverse engineer, recompile, or disassemble the SYSTEM Software, except and only to the extent that such activity is expressly permitted by applicable law notwithstanding this limitation.

- **Single SYSTEM.** The SYSTEM Software is licensed with the SYSTEM as a single integrated product. The SYSTEM Software installed in Read Only Memory ("ROM") of the SYSTEM may only be used as part of the SYSTEM.

- **Single EULA.** The package for the SYSTEM Software may contain multiple versions of this EULA, such as multiple translations and/or multiple media versions (e.g., in the user documentation and in the software). Even if you receive multiple versions of the EULA, you are licensed to use only one (1) copy of the SYSTEM Software.

- **Rental.** You may not rent or lease the SOFTWARE.

• **Software Transfer.** You may permanently transfer all of your rights under this EULA only as part of a sale or transfer of the SYSTEM, provided you retain no copies, you transfer all of the SOFTWARE (including all component parts, the media, any upgrades or backup copies, this EULA and, if applicable, the Certificate(s) of Authenticity), and the recipient agrees to the terms of this EULA. If the SOFTWARE is an upgrade, any transfer must include all prior versions of the SOFTWARE.

• **Termination.** Without prejudice to any other rights, Manufacturer or MS may terminate this EULA if you fail to comply with the terms and conditions of the EULA. In such event, you must destroy all copies of the SOFTWARE and all of its component parts.

• **UPGRADES.** If the SYSTEM Software and this EULA are provided separate from the SYSTEM by Manufacturer and the SYSTEM Software is on a ROM chip, CD ROM disk(s) or floppy disk(s), and labeled "For ROM Upgrade Purpose Only" ("ROM Upgrade"), you may install one copy of the ROM Upgrade onto the SYSTEM as a replacement copy for the SYSTEM Software originally installed on the SYSTEM and use it in accordance with Section 1 of this EULA.

• **COPYRIGHT.** All title and copyrights in and to the SOFTWARE (including but not limited to any images, photographs, animations, video, audio, music, text and "applets," incorporated into the SOFTWARE), the accompanying printed materials, and any copies of the SOFTWARE, are owned by MS or its suppliers (including Microsoft Corporation). You may not copy the printed materials accompanying the SOFTWARE. All rights not specifically granted under this EULA are reserved by MS and its suppliers (including Microsoft Corporation).

• **PRODUCT SUPPORT.** Product support for the SOFTWARE is not provided by MS, its parent corporation, Microsoft Corporation, or their affiliates or subsidiaries. For product support, please refer to Manufacturer's support number provided in the documentation for the SYSTEM. Should you have any questions concerning this EULA, or if you desire to contact Manufacturer for any other reason, please refer to the address provided in the documentation for SYSTEM.

• **EXPORT RESTRICTIONS.** You agree that you will not export or re-export the SOFTWARE to any country, person, or entity subject to U.S. export restrictions. You specifically agree not to export or re-export the SOFTWARE: (i) to any country to which the U.S. has embargoed or restricted the export of goods or services, which as of March 1998 include, but are not necessarily limited to Cuba, Iran, Iraq, Libya, North Korea, Sudan and Syria, or to any national of any such country, wherever located, who intends to transmit or transport the products back to such country; (ii) to any person or entity who you know or have reason to know will utilize the SOFTWARE or portion thereof in the design, development or production of nuclear, chemical or biological weapons; or (iii) to any person or entity who has been prohibited from participating in U.S. export transactions by any federal agency of the U.S. government. If the SOFTWARE is labeled "North America Only Version" above, on the Products Identification Card, or on the SOFTWARE packaging or other written materials, then the following applies: The SOFTWARE is intended for distribution only in the United States, its territories and possessions (including Puerto Rico, Guam, and U.S. Virgin Islands) and Canada. Export of the SOFTWARE from the United States is regulated under "EI controls" of the Export Administration Regulations (EAR, 15 CFR 730-744) of the U.S. Commerce Department, Bureau of Export Administration (BXA). A license is required to export the SOFTWARE outside the United States or Canada. You agree that you will not directly or indirectly, export or re-export the SOFTWARE (or portions thereof) to any country, other than Canada, or to any person or entity subject to U.S. export restrictions without first obtaining a Commerce Department Export license. You warrant and represent that neither the BXA nor any other U.S. federal agency has suspended, revoked or denied your export privileges.

• **NOTE ON JAVA SUPPORT.** The SYSTEM Software may contain support for programs written in Java. Java technology is not fault tolerant and is not designed, manufactured, or intended for use or resale as on-line control equipment in hazardous environments requiring fail-safe performance, such as in the operation of nuclear facilities, aircraft navigation or communication systems, air traffic control, direct lie support machines, or weapons systems, in which the failure of Java technology could lead directly to death, personal injury, or severe physical or environmental damage.

## **LIMITED WARRANTY**

• **Limited Warranty.** Manufacturer warrants that the SOFTWARE will perform substantially in accordance with the accompanying written materials for a period of ninety (90) days from the date of receipt. Any implied warranties on the SOFTWARE are limited to ninety (90) days. Some states/jurisdictions do not allow limitations on duration of an implied warranty, so the above limitation may not apply to you.

• **Customer Remedies.** Manufacturer's and its suppliers entire liability and your exclusive remedy shall be, at Manufacturer's option, either (a) return of the price paid, or (b) repair or replacement of the SOFTWARE that does not meet the above Limited Warranty and which is returned to Manufacturer with a copy of your receipt. This Limited Warranty is void if failure of the SOFTWARE has resulted from accident, abuse, or misapplication. Any replacement SOFTWARE will be warranted for the remainder for the original warranty period or thirty (30) days, whichever is longer.

• **No Other Warranties.** EXCEPT AS EXPRESSLY PROVIDED IN THE LIMITED WARRANTY SECTION ABOVE, THE SOFTWARE IS PROVIDED TO THE END USER "AS IS" WITHOUT WARRANTY OF ANY KIND, EITHER EXPRESSED OR IMPLIED, INCLUDING, BUT NOT LIMITED TO, WARRANTIES OF NON-INFRINGEMENT, MERCHANTABILITY, AND/OR FITNESS FOR A PARTICULAR PURPOSE. THE ENTIRE RISK OF THE QUALITY AND PERFORMANCE OF THE SOFTWARE IS WITH YOU.

• **No Liability for Consequential Damages.** MANUFACTURER OR MANUFACTURER'S SUPPLIERS, INCLUDING MS AND ITS SUPPLIERS, SHALL NOT BE HELD TO ANY LIABILITY FOR ANY DAMAGES SUFFERED OR INCURRED BY THE END USER (INCLUDING, BUT NOT LIMITED TO, GENERAL, SPECIAL, CONSEQUENTIAL OR INCIDENTAL DAMAGES INFORMATION AND THE LIKE), ARISING FROM OR IN CONNECTION WITH THE DELIVERY, USE OR PERFORMANCE OF THE SOFTWARE.

If you acquired this EULA in the United States, this EULA is governed by the laws of the State of Washington.

If you acquired this EULA in Canada, this EULA is governed by the laws of the Province of Ontario, Canada. Each of the parties hereto irrevocably attires to the jurisdiction of the courts of the Province of Ontario and further agrees to commence any litigation which may arise hereunder in the courts located in the Judicial District of York, Province of Ontario.

If this EULA was acquired outside the United States, then local law may apply. Should you have any questions concerning this EULA, please contact the Manufacturer of your SYSTEMS.

-

#### **U.S. GOVERNMENT RESTRICTED RIGHTS**

The SOFTWARE and documentation are provided with RESTRICTED RIGHTS. Use, duplication, or disclosure by the Government is subject to restrictions as set forth in subparagraph (c)(1)(ii) of the Rights in Technical Data and Computer Software clause at DFARS 252.227-7013 or subparagraphs(c)(1) and (2) of the Commercial Computer Software—Restricted Rights at 48 CFR 52.227-19, as applicable. Manufacturer is Microsoft Corporation/One Microsoft Way/Redmond, WA 98052-6399.

<b>INTRODUCTION</b>	<b>12</b>
INTRODUCING THE THINCLIENT	12
FEATURES OF THINCLIENT TC-620 SERIES	13
<b>HARDWARE SETUP</b>	<b>15</b>
UNPACKING & CHECKING THE EQUIPMENT	15
IDENTIFY PARTS OF THE THINCLIENT TC620	16
CONNECTING THE TERMINAL	18
USING THE POWER ON/OFF SWITCH	18
<b>START UP</b>	<b>19</b>
QUICKLY CONFIGURE YOUR THINCLIENT	19
<b>TERMINAL CONNECTION MANAGER</b>	<b>24</b>
DEFAULT CONNECTION	25
Media Player	25
Imager Viewer	26
ADDING A NEW CONNECTION	27
Creating a new ICA Client Connection	30
Creating a new RDP Connection	33
Creating a Internet Explorer Connection	36
Creating a Terminal Emulator	37
Creating a Dial-Up Connection	38
Creating a Direct Connection	40
Creating a Virtual Private Network Connection	41
Creating a PPPoE connection	42
CONFIGURE AN EXISTING CONNECTION	43
CONNECTING TO A SERVER	46
AUTO CONNECTING	47
VNC MONITOR AGENT	62
<b>CHANGING THE TERMINAL PROPERTIES</b>	<b>48</b>
INTERNET OPTION	49
General	49
Connection	49
Security	50
Privacy	50
Advanced	51

Pop-ups	51
CERTIFICATES	52
DATE/TIME	52
DIALING PROPERTIES	52
DISPLAY	53
ETHERNET PROPERTIES	54
FIRMWARE	54
GLOBAL ICA CLIENT SETTINGS	55
Keyboard Shortcuts	56
Preferences	56
Server Location	57
Firewall Settings	57
KEYBOARD PROPERTIES	58
LINE PRINTER	58
MOUSE PROPERTIES	58
NETWORK SETTINGS	59
OWNER	59
REGIONAL AND LANGUAGE SETTINGS	59
SECURITY	60
SYSTEM PROPERTIES	60
TERMINAL SERVER CLIENT LICENSES	61
THINPRINT CLIENT CONFIGURATION	61
TOUCH PANEL PROPERTIES	62
VOLUME & SOUND PROPERTIES	63
WIRELESS PROPERTIES	63
TCP/IP Settings for Wireless LAN	63
Card Setup	64
<b>SLAVE SMART CARD FOR THINCLIENT</b>	<b>66</b>
SMART CARD FEATURES:	66
HOW TO USE THE SLAVE SMART CARD ON THIN CLIENT	66
Login with NEW Slave Smart Card	66
Change to a New Pin Number	67
USING SMART CARD ON A THINCLIENT WITH EXISTING CONNECTION	67
USING SMART CARD AT POWER ON	69
TERMINAL SMART CARD PROPERTIES	69
Smart Card Pin Number	69
Connection Information	70
Erasing Smart card contents	71

<b>BIOS UPGRADE</b>	<b>72</b>
<b>OPERATION SYSTEM RECOVERY</b>	<b>72</b>

## **Introduction**

### **Introducing the ThinClient**

ThinClient Windows Based Terminals are designed to access any Windows application such as Microsoft Word, Excel or PowerPoint residing on Windows Terminal Server. ThinClient is easy to implement and built with user-friendly interface. Simply plug a ThinClient onto the network, configure ThinClient, and then connect to Windows Terminal Server to run Windows applications. ThinClient supports RDP (Remote Desktop Protocol) and Citrix ICA (Independent Computing Architecture). Built with extreme flexibility, ThinClient can connect to one or more Windows NT-based Servers via RDP, Citrix MetaFrame or WinFrame capable with ICA.

## Features of ThinClient TC-620 Series

Model	TC-600 Thin Client
Processor	
CPU	VIA Luke 800Hz/1GHz
Memory	
RAM	One SDRAM 144pin DIMM 128MB up to 512MB
DOM	One Disk on chip flash ROM 32MB up to 144MB
Standard Interface	
VGA	up to 2048x1536x32bit true color, VESA monitor support with DDC
LAN	One 10/100BaseT fast Ethernet port, twisted pair RJ45
Wireless LAN	USB Wireless LAN 802.11b/g (Option)
Smart Card	One Smart Card (Option)
PS2	Support PS2 KB, Mouse
Serial	Two RS232, 9Pin DSUB COM1, COM2
Parallel	25Pin DSUB
USB Port	2 x USB 2.0 Ports (Front), 2 x USB 2.0 Ports (Back)
Audio Line Out	1/8inches mini, full 18bit stereo, 44KHz sample rate
Power System	
Connector	2 Pin Jack 5V DC.
AC/DC Adapter	Input AC 100/240 Volt, 50~60Hz. Output 12VDC, 4.2A
Physical Mechanical	
Dimension	220 mm (H) x 45 mm (W) x 155 mm (D)
Client Side System Software	
OS System	Microsoft Windows CE 5.0
Terminal	IBM: 3270, 5250 for Display and Printer
Emulations	Digital: VT52, VT100, VT220-7, VT220-8, VT320-7, VT320-8, VT420-7, VT420-8,
Supports SSH	VT525-7, VT525-8
(Option)	ANSI: SCO ANSI, BBS ANSI, AT 386, AIXTERM, LINUX, XTERM, WYSE 370
	General Terminals: TANDEM, HP, DG, SIEMENS, IBM 3151
	ASCII Terminals: WYSE 50, WYSE 50+, WYSE 60, TVI 910+, TVI 920, TVI 925, TVI 950, TVI 955, ADDS VP A2, HZ 1500
Local Browser	IE 6.0
Connectivity	Microsoft Remote Desktop Protocol, RDP5.5
	Citrix ICA Protocol, ICA 9.0
Server Side System Software	

Management Tool	AXUS ThinClient Remote Manager
-----------------	--------------------------------

## **Hardware Setup**

### **Unpacking & Checking the Equipment**

Before unpacking the ThinClient, prepare a clean, stable surface to put the contents of your ThinClient shipping container on. You should find following items in the ThinClient package:

#### **The ThinClient TC620**

One AC Adapter

A Power Cord

A Stand for your ThinClient

User's Manual

\*A PS/2 Keyboard with cable

\*A PS/2 Mouse with cable

#### **The ThinClient TC820**

One AC Adapter

A Power Cord

User's Manual

PS/2 Mouse, Keyboard spilt cable

\*A PS/2 Keyboard with cable

\*A PS/2 Mouse with cable

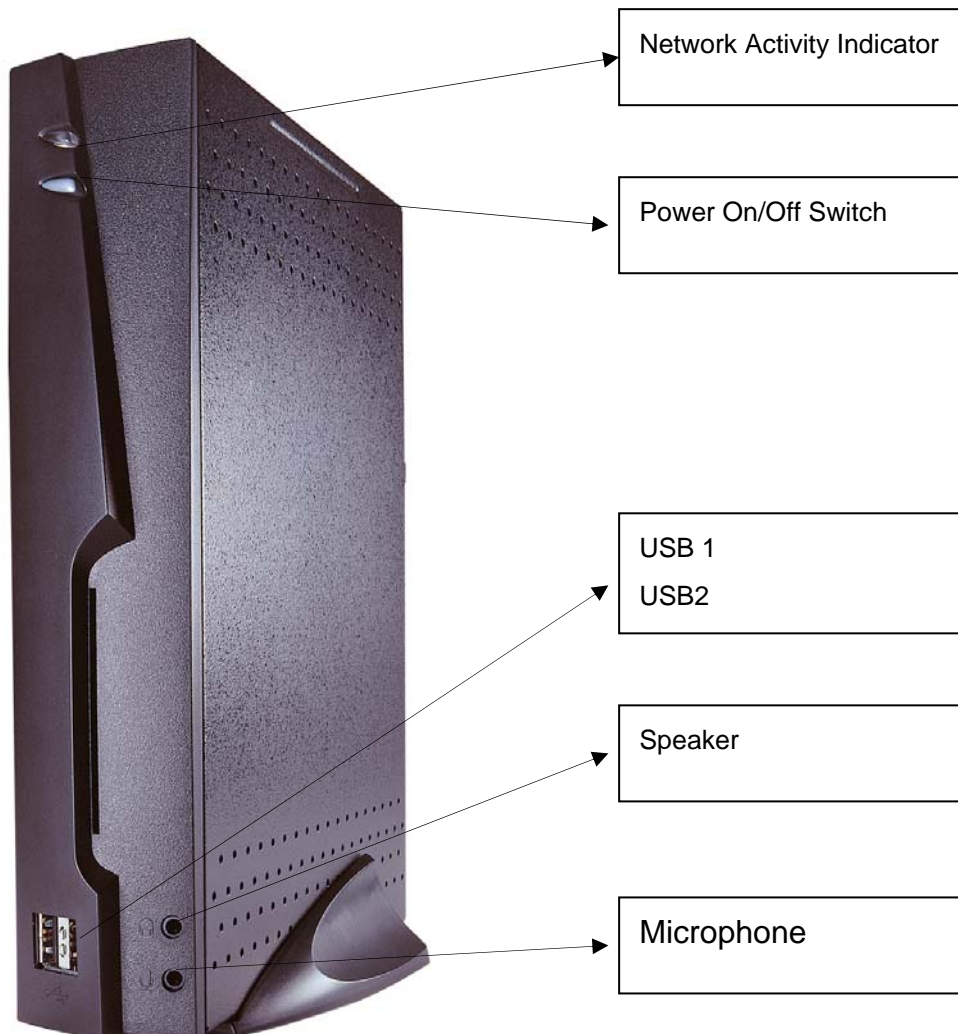
#### **Notice:**

\*PS/2 Keyboard and Mouse are optional items.

## Identify Parts of the ThinClient TC620

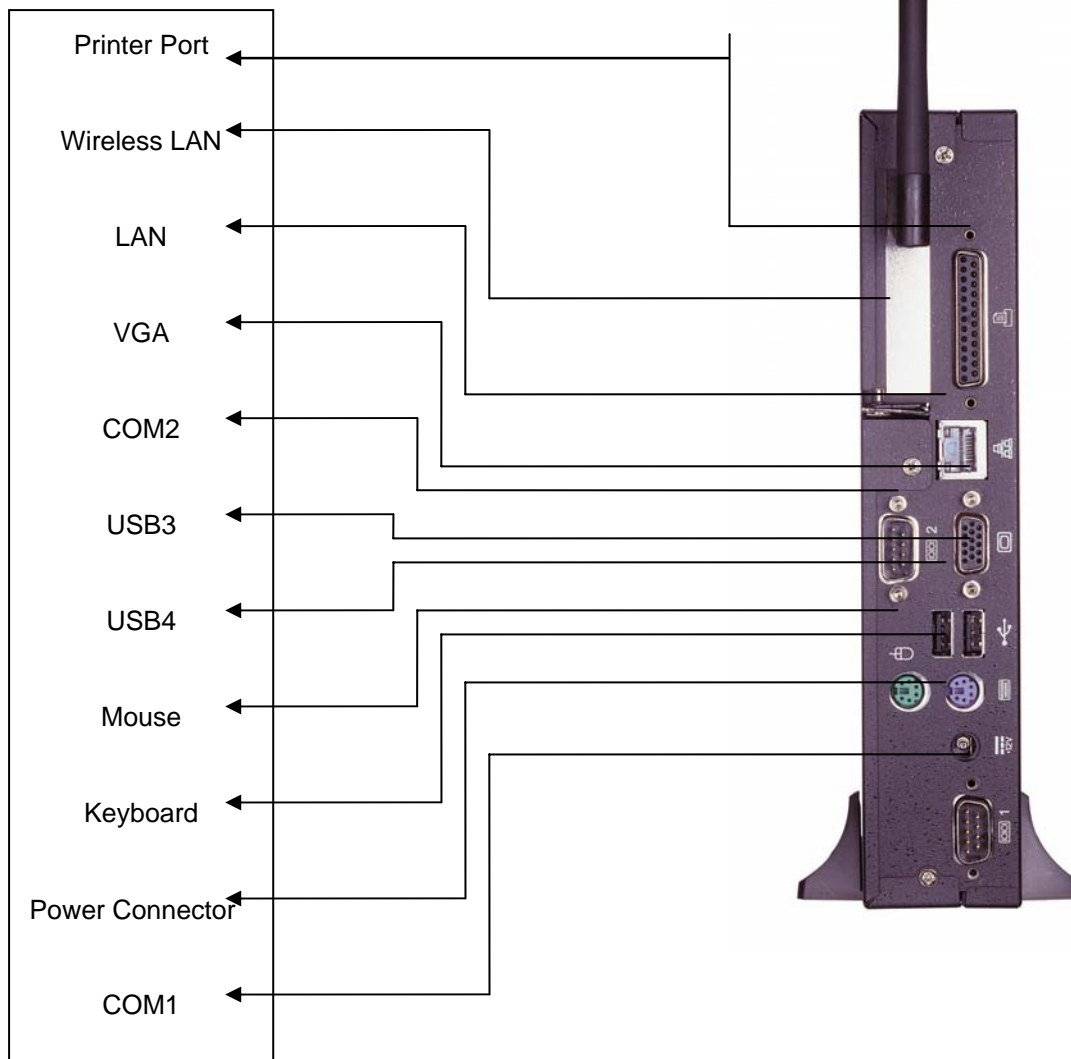
The following illustration identifies the various features of the ThinClient TC620.

### Front View



Power On/Off Switch (The Power On/Off Switch turns your ThinClient on or off. Push it in for on, out for off) Network Activity Indicator (Yellow lights when your ThinClient is sending data through a network) Power Indicator (Green lights when your ThinClient is connected to a power source and is turned on)

## Rear View



Network , RJ-45 jack for a 10/100BaseT twisted pair Ethernet connector.

Video, standard DB-15 VGA type connector for Monitor.

Parallel, standard DB-25 parallel port for printer.

COM1, DB-9 RS232 port, for external modem, touch screen .

COM2, DB-9 RS232 port.

USB1, Universal Serial Bus connector.

USB2, Universal Serial Bus connector.

Mouse, PS/2 type mouse connector.

Keyboard, PS/2 type keyboard connector.

Power, Power Connector

## **Connecting the Terminal**

Before connecting the cables, arrange your ThinClient and monitor in your work area. Be sure not to block the ventilations around ThinClient and Monitor.

Plug the AC power core into the power adapter, then into AC power source.

Connect the adapter cable to power connector

Connect the keyboard cable to keyboard connector.

Connect the mouse cable to mouse connector.

Connect the monitor video cable to video connector.

Connect the monitor power cable to the AC power source.

Connect the 10/100Base-T twisted pair network cable to network connector.

If you have a local printer, connect its cable to parallel port.

If you have microphone, plug its cable into microphone port.

If you have headphone or speaker, plug its cable into headphone port.

## **Using the Power On/Off Switch**

After the cables are all connected, you are now ready to turn it on by pressing power On/Off switch.

To turn on your ThinClient, push the power On/Off switch in. The power indication light will be led.

To turn off your ThinClient, push the power On/Off switch again and hold for 4 seconds so that it returns to its extended position. The power indication light will be off.

## START UP

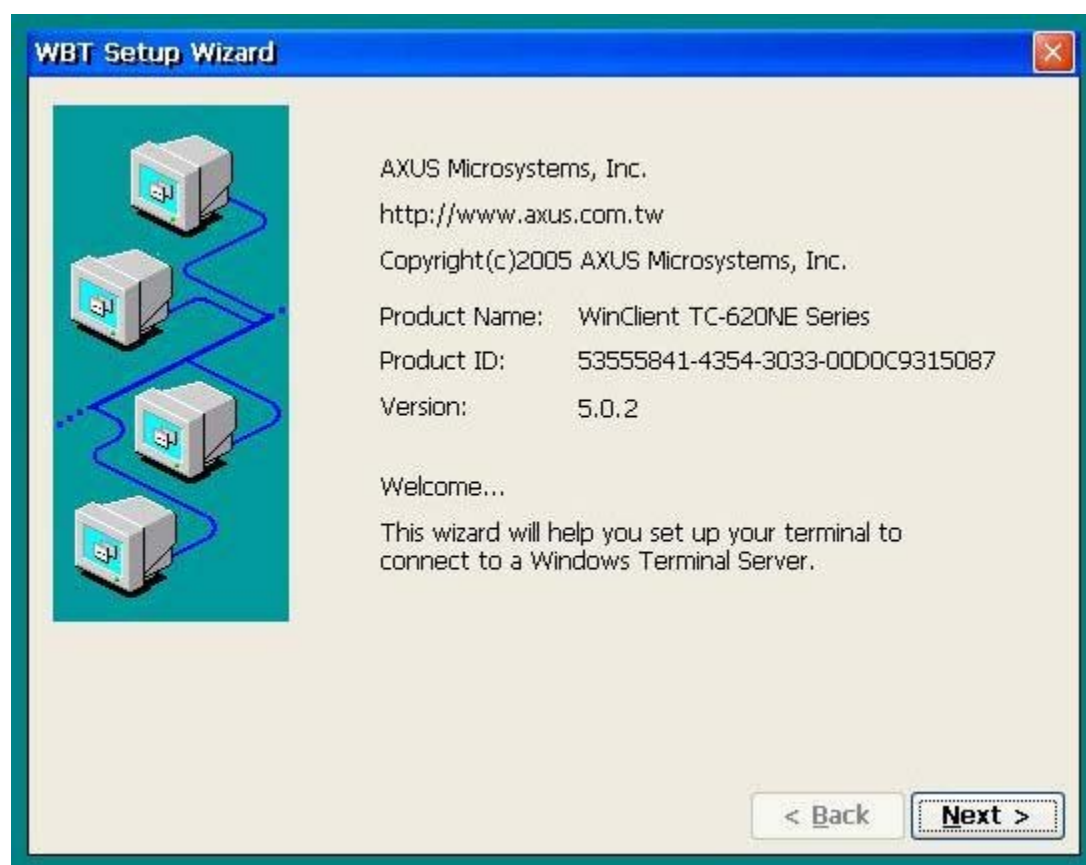
### Quickly Configure Your ThinClient

After completing the hardware setup, the ThinClient must be configured before it is ready to use. This chapter guides you through the most easy and quick way to configure your WinClinet. Quick configuring your ThinClient can be accomplished through following steps:

Turn on your ThinClient.

The Welcome setup wizard dialog box is first dialog box when you turn on your terminal for the first time. Click on the **[NEXT]** button in the dialog box to display the next setup wizard dialog box.

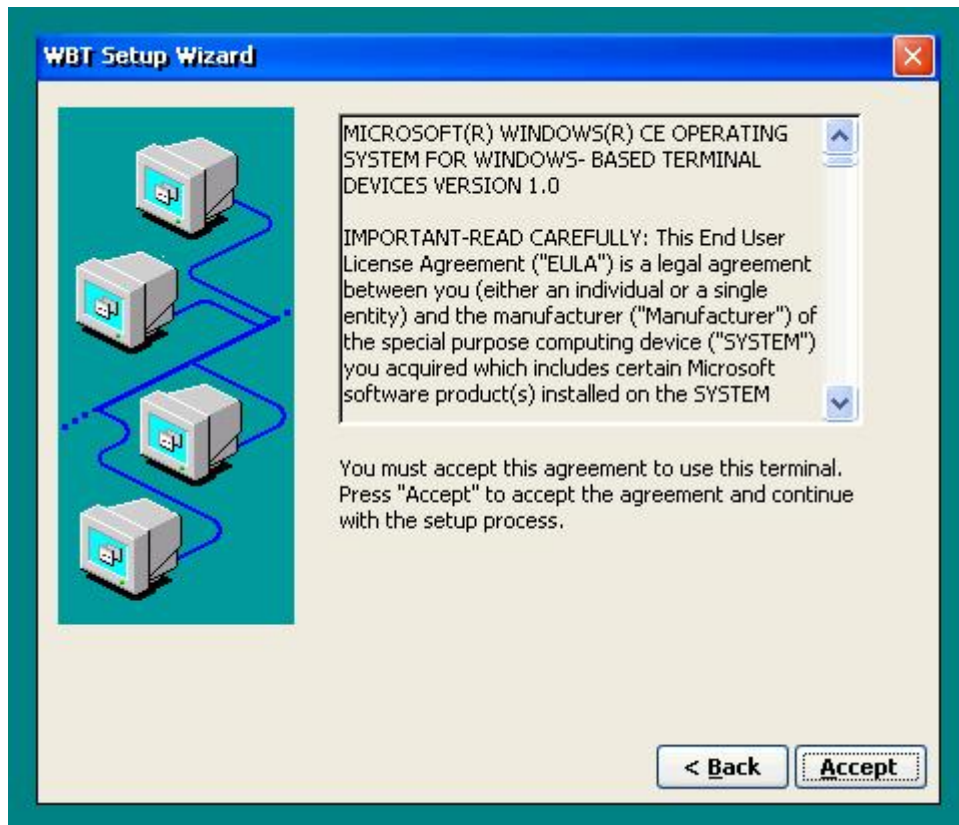
### Welcome



## Setup Wizard Step 1

The End User License Agreement setup wizard dialog box is the next dialog box. Read the license agreement carefully. If you accept the agreement to use this terminal, click on the [ACCEPT] and continue with setup process.

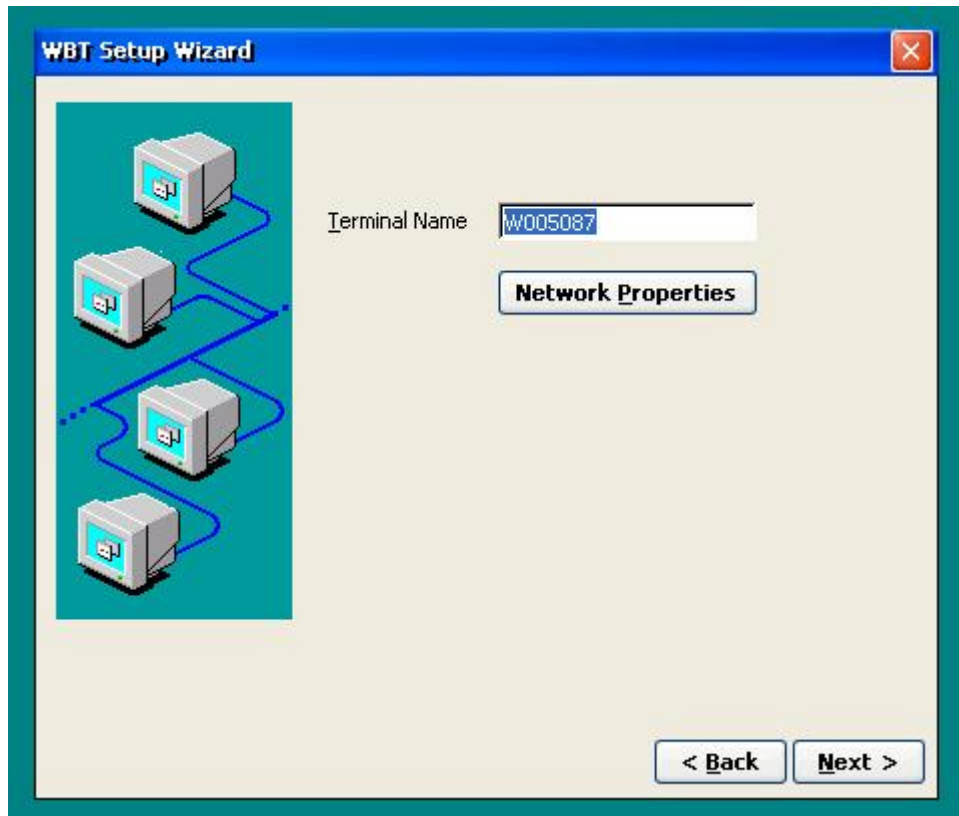
## End User License Agreement



## Setup Wizard Step 2

The following dialog box allows you to name your Thinclient. Also, it allows you to configure your Network settings (For details of setting up the Network, please refer to Network Settings Properties page 51).

### Naming Your ThinClient



### Setup Wizard Step 3

Printers, Security, Owner, Date, Regional, Display and Line Printer are all part of this panel.



**Printers** – allows user to choose printer port and configure a compatible printer to be connected with ThinClient.

**Security** – allows user to put a password to protect this ThinClient. At power on, Screen Saver resume, F2 properties panel can all be protected by this function. Connection manager can also be hidden to prevent more connections being made by using this option.

**Owner** – allows the rightful owner of this client to input personal information and network identification on the ThinClient.

**Date/Time** – allows ThinClient to be adjusted to the current local time.

**Regional Settings** – allows ThinClient to be regionalized. The settings within consist of locale, Interface language, input language.

**Display Properties** – allows user to adjust desktop area and resolution of the ThinClient. **Caution:** Always click perform test settings before clicking on ok.

**Line Printer** – allows LPD to be enabled and share printer with UNIX based server/client.

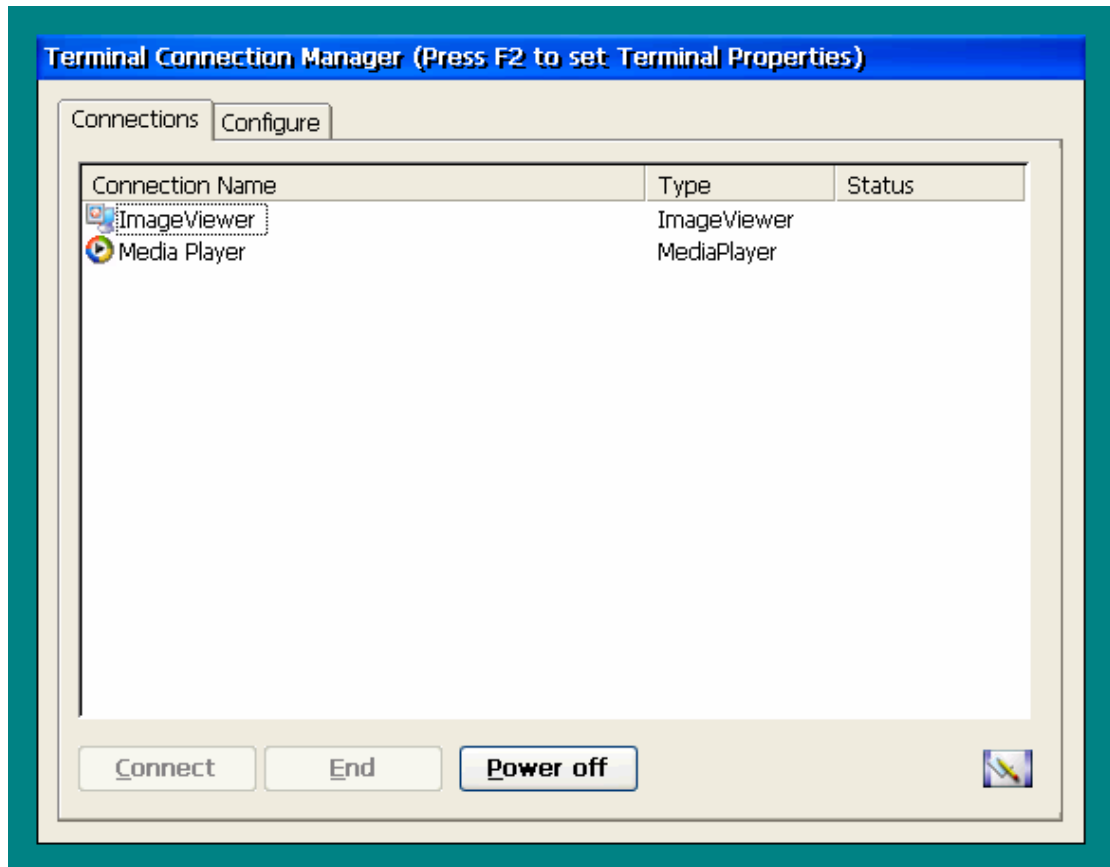
## Finalized

You are now ready to run your ThinClient



## Terminal Connection Manager

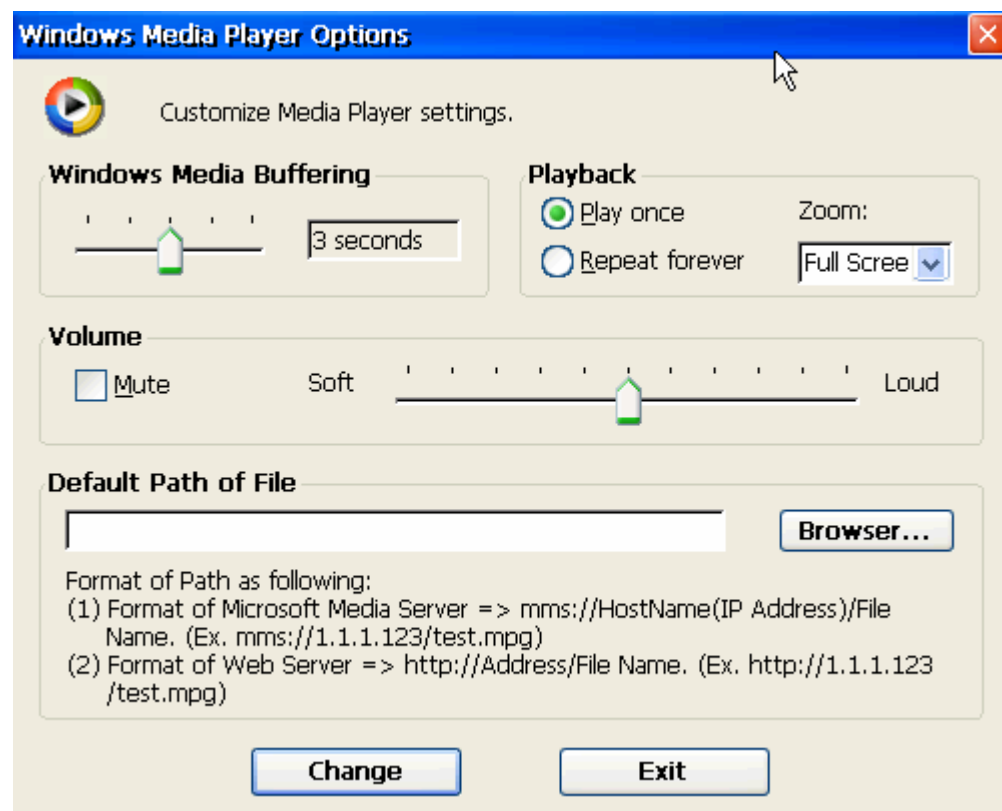
This will be the main screen of your ThinClient. It could also be the most important screen that ThinClient has to offer.



## Default Connection

### Media Player

Media Player enables user to open a steam media and play it. User can specify the location of media file which he would like to play. It allows the path of internet or external storage such as USB Disk.



- **Windows Media Buffering:**  
To specifies the buffering time (up to 5 seconds). The longer the buffer time, the longer it takes for streaming content to begin playing.
- **Playback:**  
Play once: the selected media file will be played once.  
Repeat forever: When repeat is turned on, a selected media file can be played repeatedly.  
Zoom: There are four types to view a selected media file  
Full Screen: view a video using the entire screen.  
50%: Screen zooms to 50%

100%: Screen zooms to 100%

200%: Screen zooms to 200%

- Volume: enable user to adjust volume or mute.
- Default path of file: Select the media file to play from external storage, or network using HTTP or MMS format.

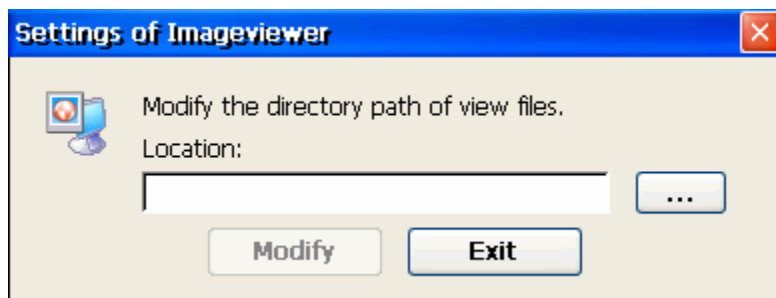
For instance of HTTP: <http://1.1.1.1/play.mpg>.

For instance of MMS: <mms://1.1.1.1/play.mpg>

### Imager Viewer

User can view the picture or images using Imager Viewer. To specify the folder to show pictures or images, where you can:

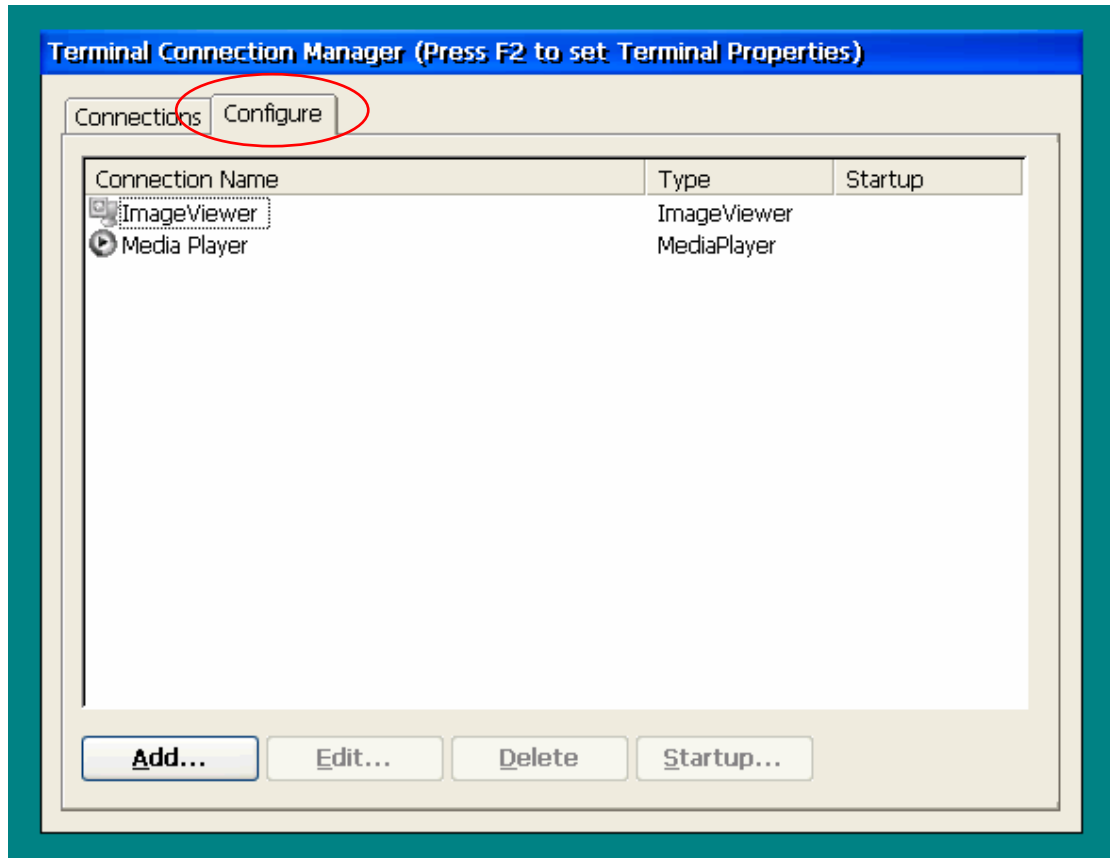
- Scroll through the images in the folder.
- Increase or decrease the image preview size.
- View the image in full size or as the best fit for your window.
- View a slide show of all your images, or select the set of images you'd like to view in a slide show.
- Rotate images right or left by 90 degrees.



## Adding a new connection

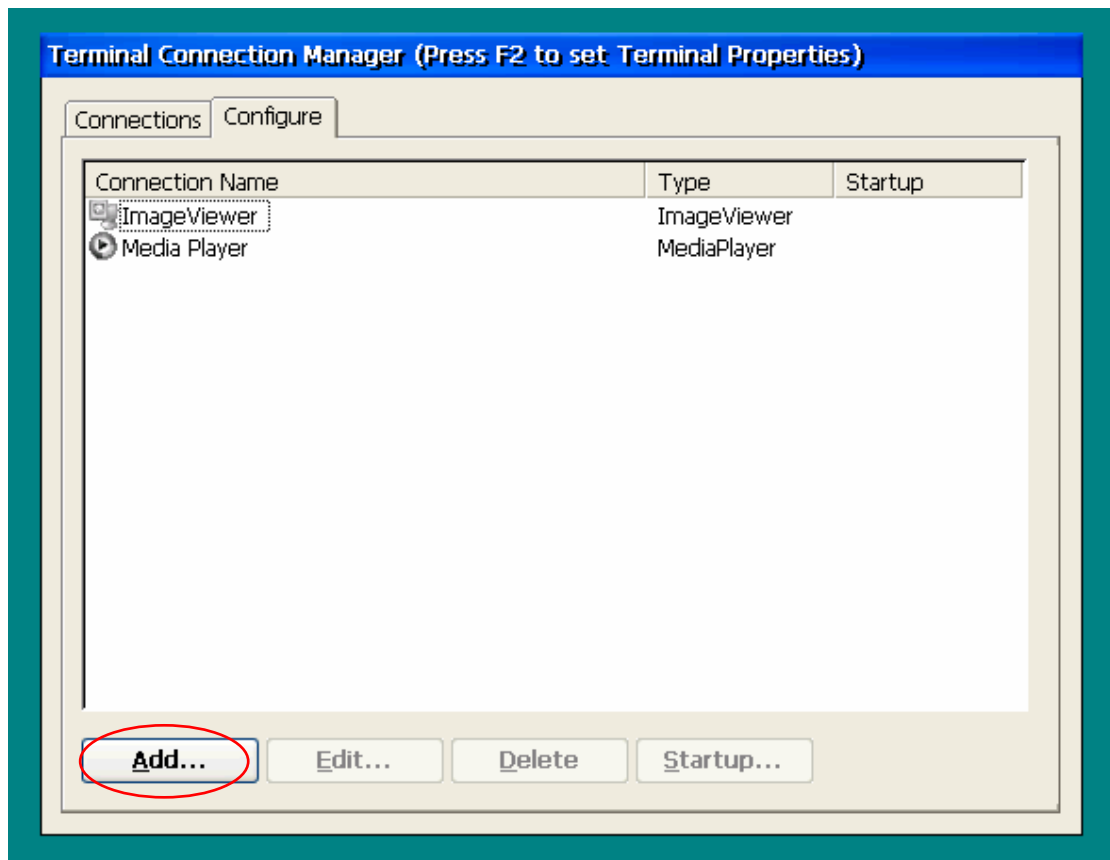
### Step 1

Click on [**Configure**] tab



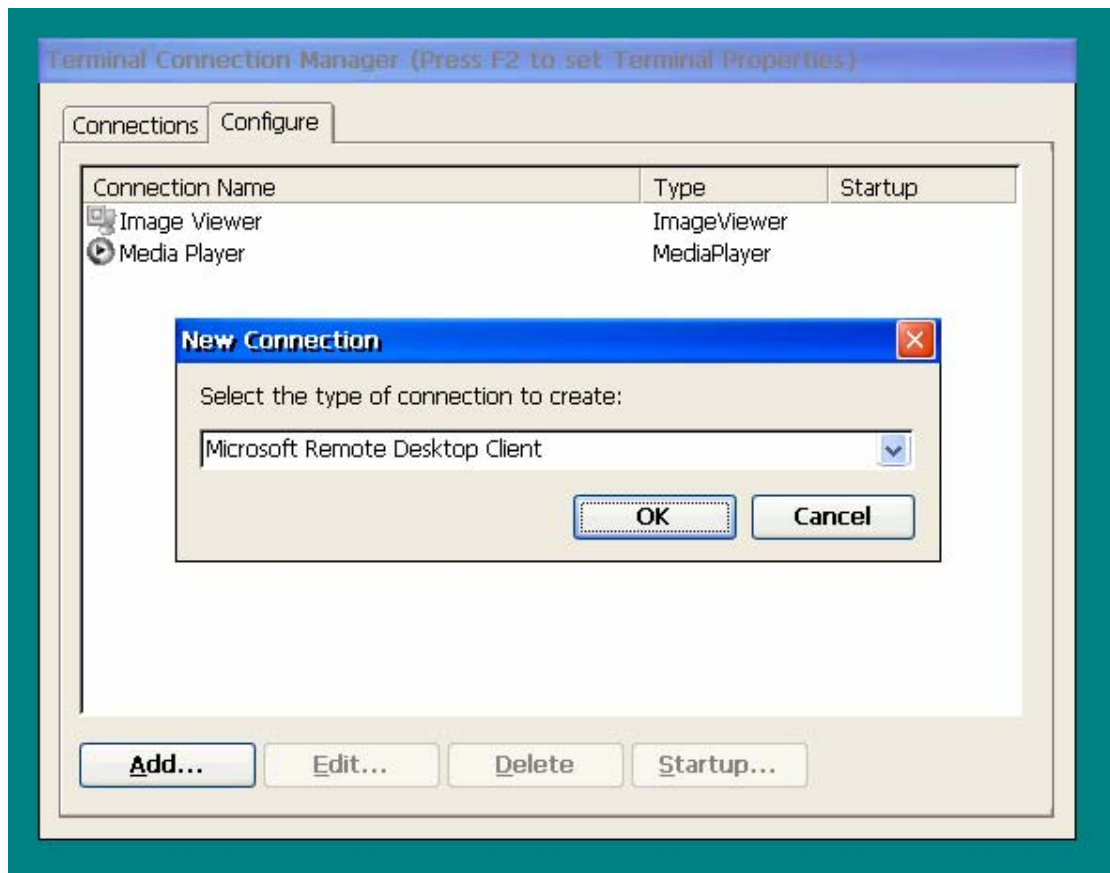
## Step 2

Click on **[Add]** button



### Step 3

A popup window should appear there will be many different types of connection for you to choose from.



List of types of connections allowed.

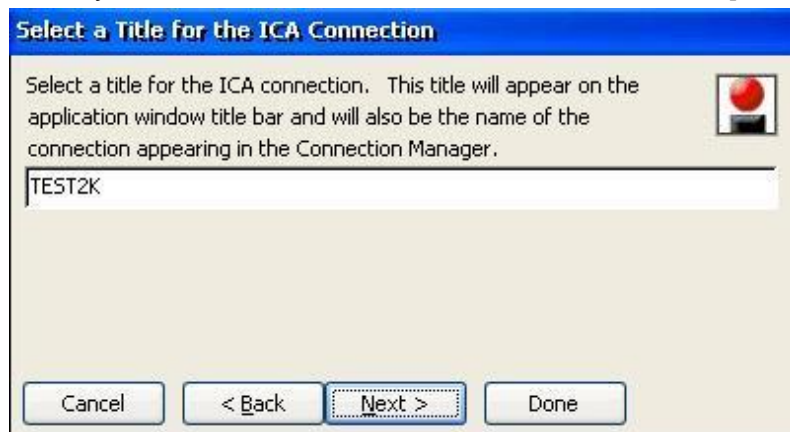
- RDP Connection
- Internet Explore Connection
- Citrix ICA Client
- Dial-Up Connection
- Ericom PowerTerm (for NE model only)
- PPP over Ethernet (PPPoE)
- Virtual Private Network (L2TPVPN)
- Virtual Private Network (PPTPVPN)
- Direct Connection

## Creating a new ICA Client Connection

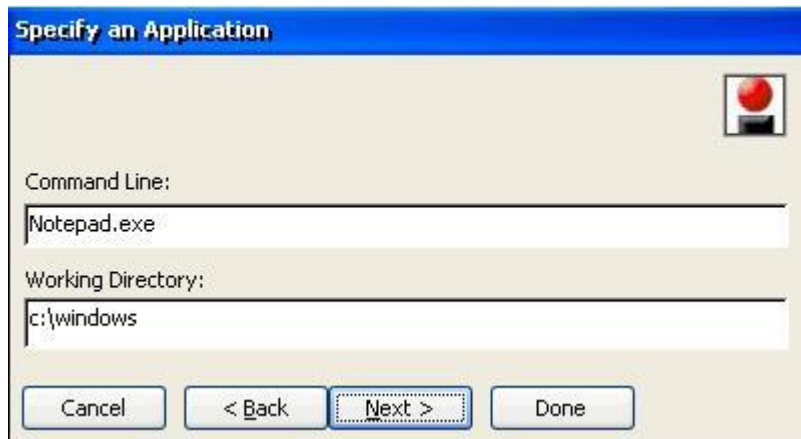
First select ICA client connections then the following window will popup. Click on **[Refresh]** to search for available ICA server within the network. Select the available ICA on the network and click on **[Next]**



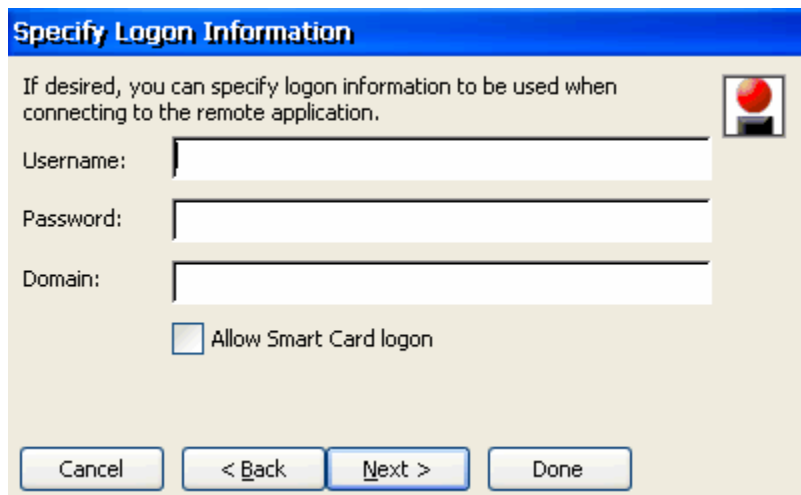
Now you will be prompted to enter a name or tile for this connection. Once you have decided on the name then click on **[Next]**



The next screen specifies an application will allow programs to be executed at logon of a user. Use the file name as the command line and working directory will be use to locate the file. You may choose to leave it blank and click on **[Next]**.



Now at the following screen you will be able to enter a set of user name and password to enable automatic logon at connect. You may also choose to leave this part black and click on **[Next]**.



At this screen you will be able to manually configure settings to specify how the application window will appear on the desktop. Select a color then click on **[Next]**



Security configuration and sound will be a on the next screen. Once settings are properly configured, and then click on **[Next]**.

**Options**

Compress Data Stream     Use Disk Cache

Enable Sound    Sound Quality: Low

Enable Session Reliability    Microphone Input: Disabled

Enable SpeedScreen Multimedia Acceleration    Port: 2598

SpeedScreen: Auto    Encryption Level: Basic

Apply Windows key combinations (e.g. Alt + Tab): In full screen desktops only

Cancel    < Back    Next >    Done

This section is for advance users or administrator only, to configure the firewall and proxy settings. If you are unsure what each field's purpose and impact, please contact your network administrator for help. For most networks you can go ahead and click on **[Done]** leaving this section untouched.

**Firewall Settings**

Proxy: none (direct)

NOTE: Enable SSL or 128-bit encryption to assure a secure connection

Proxy address:    Port: 1080

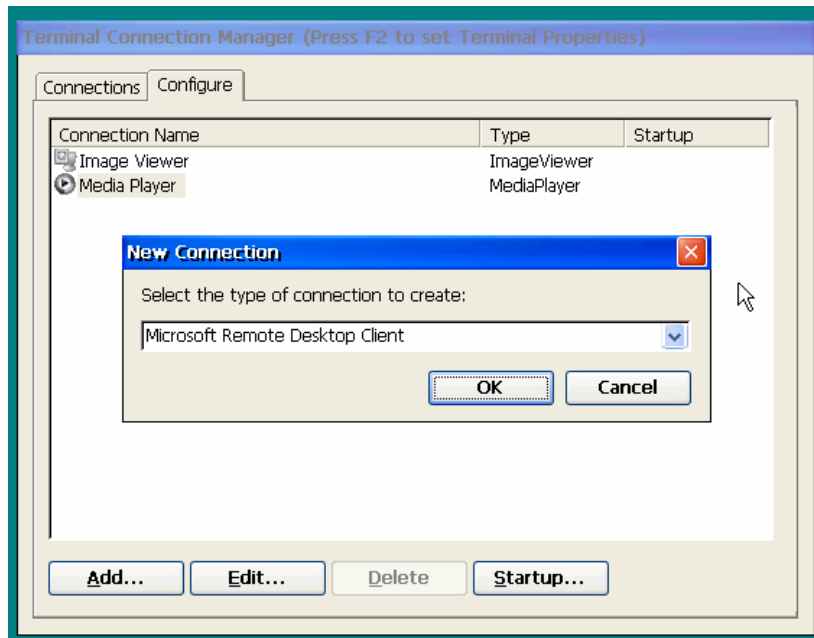
SSL/TLS Relay: Address of relay:    443

Use alternate address through firewalls

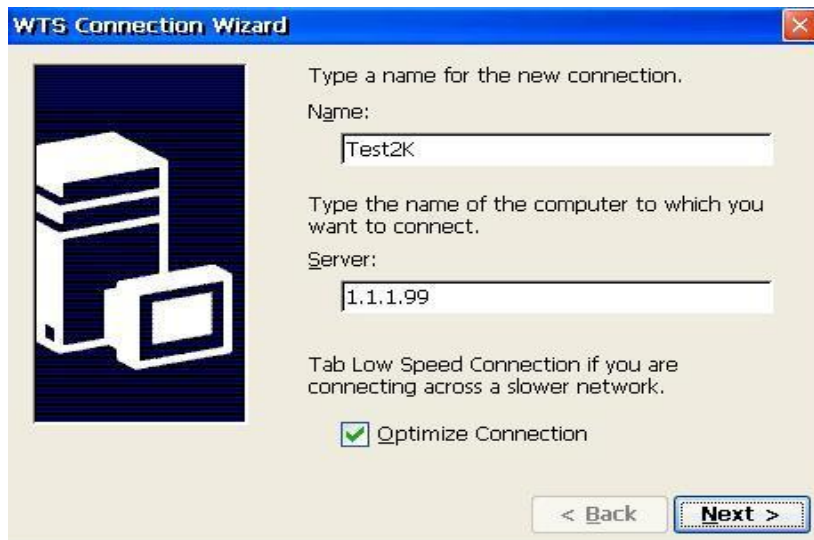
Cancel    < Back    Done

## Creating a new RDP Connection

RDP connection can be created by selecting the [**Configure**] tab then click on [**add**].



A pop up window will allow you to choose [Microsoft Remote Desktop Client]. After RDP is selected the following screen will appear. Now you are ready to key in a name for the connection and a host IP for the Thinclient to connect.



WTS Connection Wizard

Type a name for the new connection.

Name:

Type the name of the computer to which you want to connect.

Server:

Tab Low Speed Connection if you are connecting across a slower network.

Optimize Connection

< Back    Next >

The automatically log onto screen will allow you to use a pre-configured client and use that set of client to logon to the server every time when the connection is made. You may also choose to leave this part blank and click on [Next] to continue.



WTS Connection Wizard

If you want to automatically log onto the server, Tab Automatic Logon and enter your user name, password and domain. Otherwise, you will be prompted for this information each time you choose the connection.

Automatic Logon

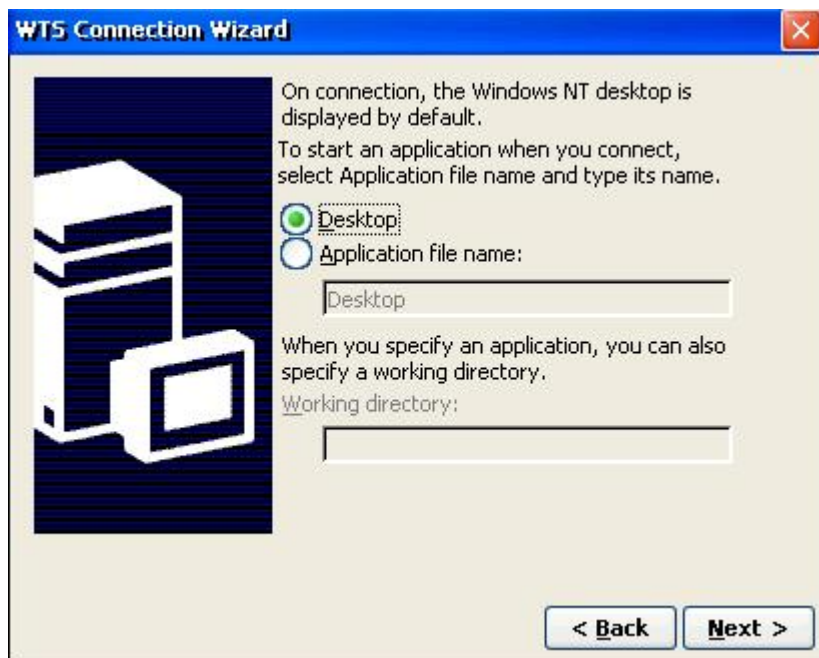
Username:

Password:

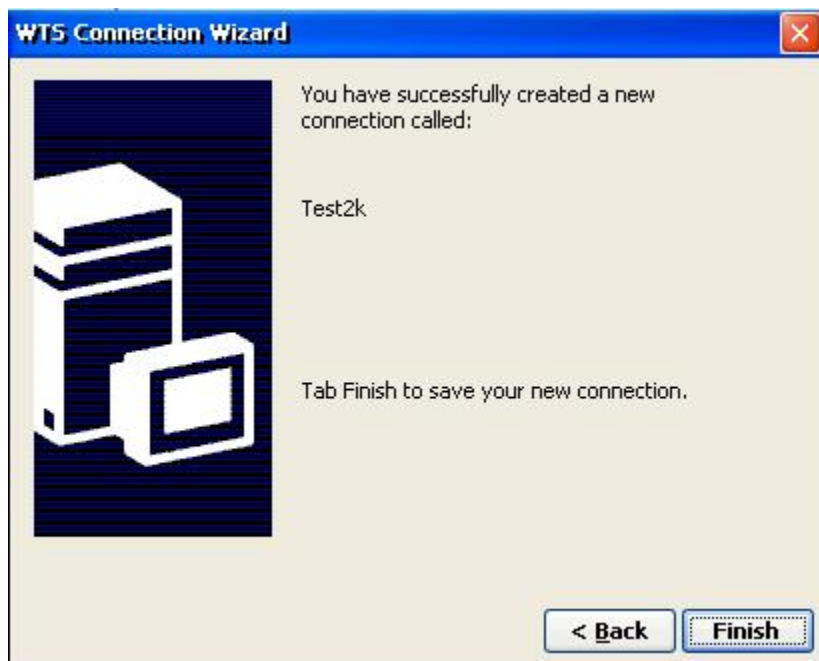
Domain:

< Back    Next >

Upon connection, the Windows desktop is displayed by default. To start an application when you connect, select [**Application file name**] and specify an application and its residing directory then click on [**Next**]. You may choose to leave this part blank, and then by default user's desktop will be at display upon connection. Click on [**Next**] to continue.

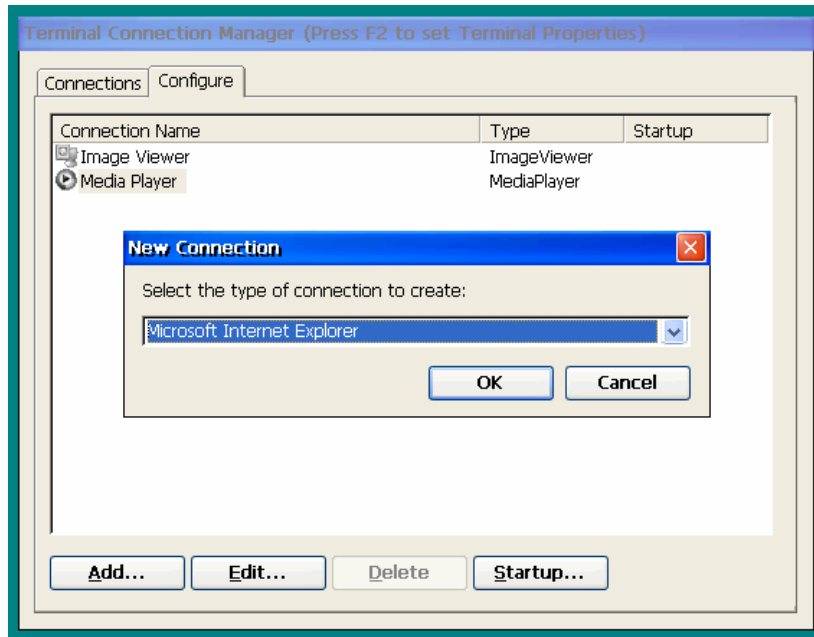


Now you are done with the connection and ready to connect.



## Creating a Internet Explorer Connection

At the main screen first click on the **[Configure]** tab and select **[Add]** at the lower left hand corner to create a new connection. After you click on add a window should pop up asking what type of connection wish to be created. Now you make select Microsoft Internet Explore and click on **[OK]**.

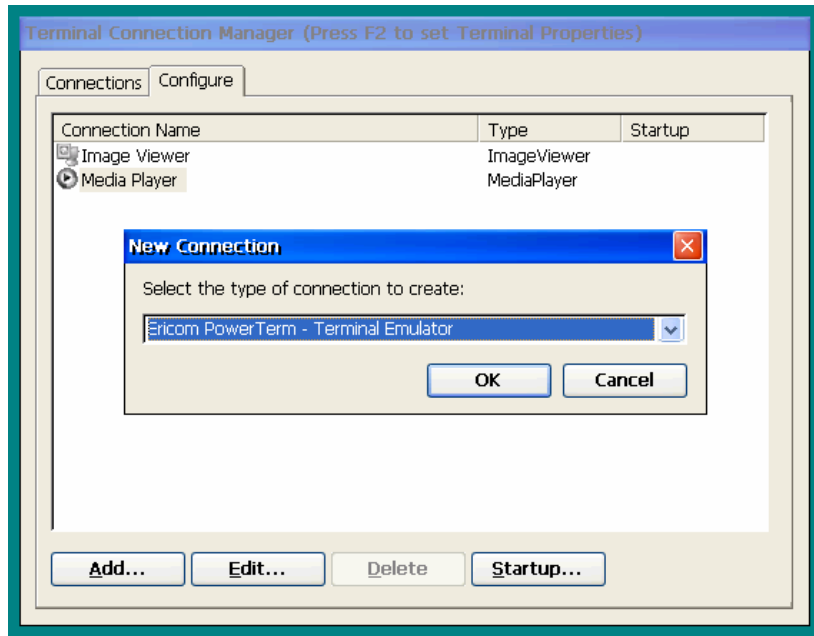


Now you will be prompted to enter the connection name and the starting page and an internet search engine. Once done entering all the information then click on **[New\Add]** to continue.

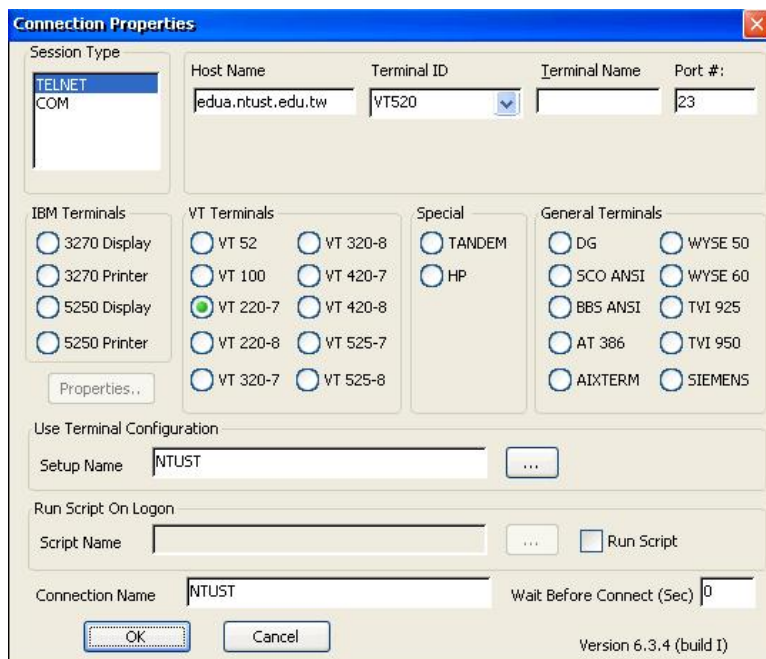


## Creating a Terminal Emulator

A terminal connection can be added by selecting the Ericom Power Term.



Connection properties will appear after OK was clicked. To make a connection a host name must be entered. The connection name at the very bottom will be the connection at the main connection screen. In this case we have NTUST as the connection name.

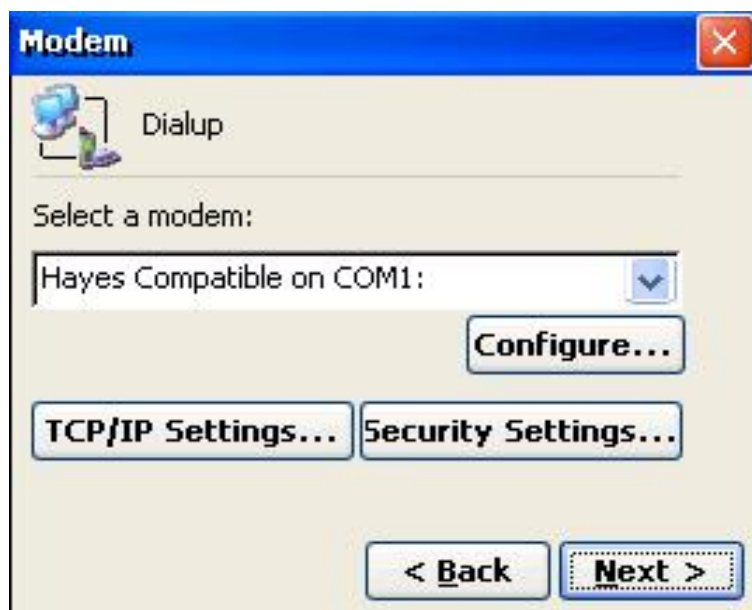


## Creating a Dial-Up Connection

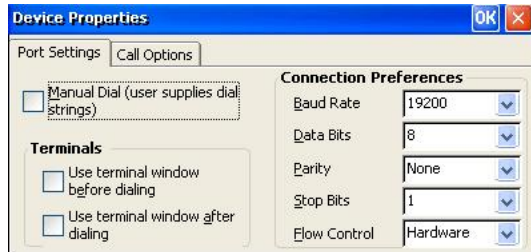
Dial-up connection page let you configure your Modem and dial up to a RAS Server. The communication between the system and the clients is connected through dial-up modem. First you will be prompted to key in the name of this connection then click on [**Next**] to continue.



Select the serial port or modem to use. This field will depend on whichever serial port modem is connected to. TCP/IP is important when using a dialup connection. To establish connection properly, always remember to key-in your DNS server IP address. Click on [**Next**] once all the settings are properly configured.



If you would like to change serial port settings or TCP/IP settings to the RAS connection, click on “Configure or TCP/IP Settings” buttons respectively, and within configure device properties you can adjust the Port Settings and the Call Options to your standard requirement.



[Configure Modem] Properties



[TCP/IP] settings.

For advance dialup connection data can be encrypted. ThinClient provides different types of encryption and these properties provide administrator or users more security level choices to access ThinClient.

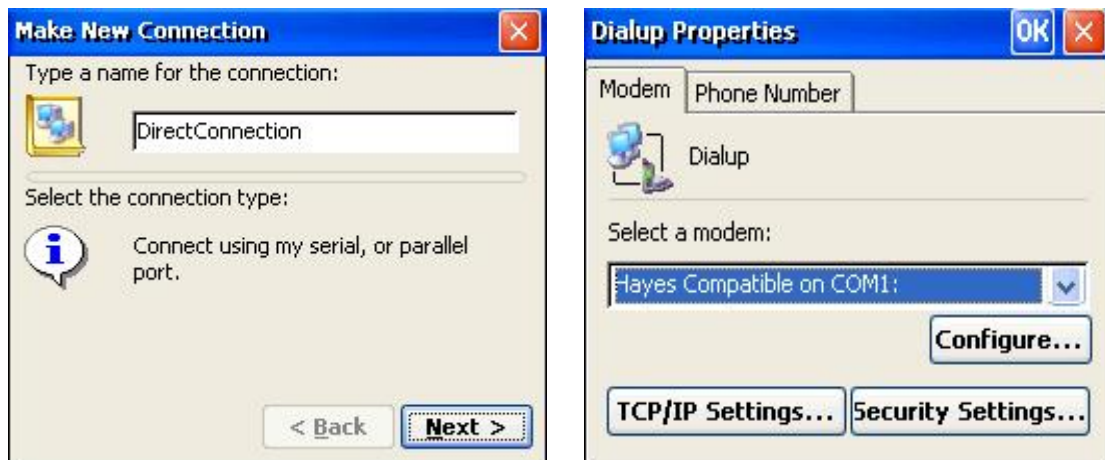


Phone number window allows area code and phone number to be entered.



## Creating a Direct Connection

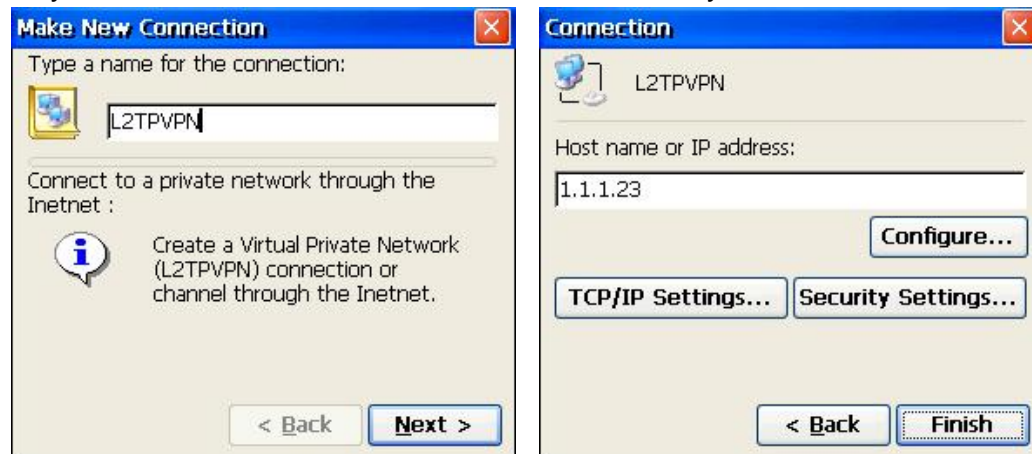
The communication between the server and the clients is connected through a serial port. First users will be prompted to enter a name for this connection. Once name is key in then click on **[Next]** to continue to the next page of setup. The second step is to select the port used to communicate. Once again, the serial port can be configured and TCP/IP can be given. For instructions on configure the serial port, TCP/IP settings, and Security Settings, please refer to page 36 of this manual.



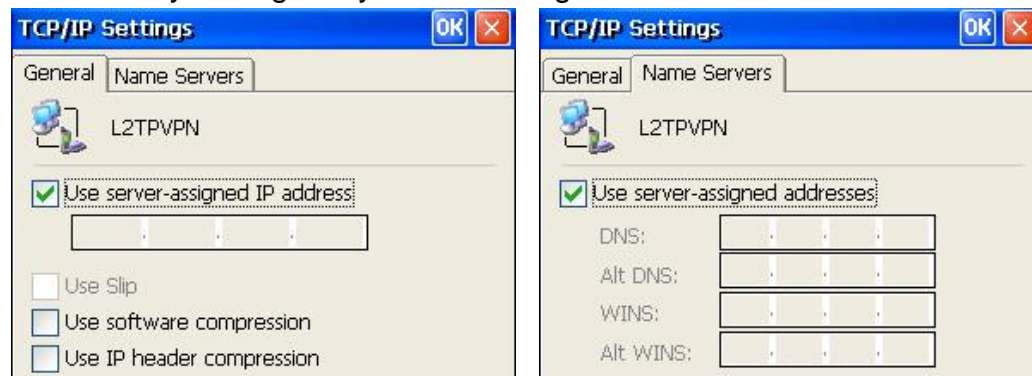
## Creating a Virtual Private Network Connection

The communication is connected through an established virtual channel between the server and the client itself in the entire network. There are two types of VPN. Please contact your Network Administrator if you are unsure which one you should select.

Same as always, we must give a name to this connection and click on **[Next]**. Key in the host name or IP address of the server you wish to connect.



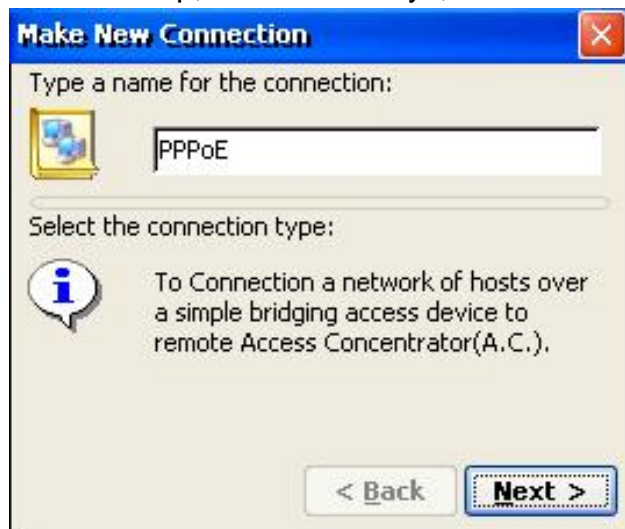
In order to have a proper connection, TCP/IP must be configured correctly. The security settings maybe also configured.



## Creating a PPPoE connection

PPPoE is mostly used to make connections with modern DSL. To create a PPPoE connection, first at the main connection manager page and select **[Configure]** tab from the top. Once you are in the configure screen, click on **[Add]** to create a new connection.

The first step, same as always, this connection must be named.

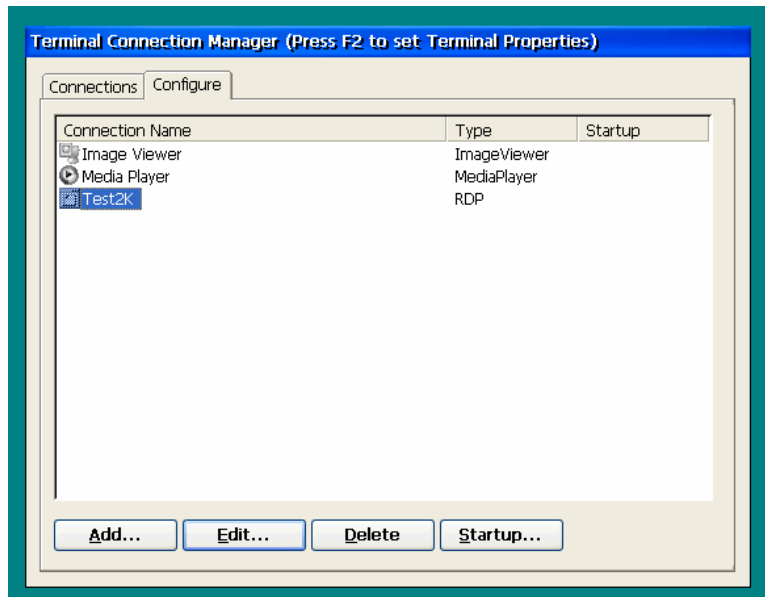


For most PPPoE connection default is set to be PPPoe line 0. If you are unsure which one to use, please contact your network administrator for help.

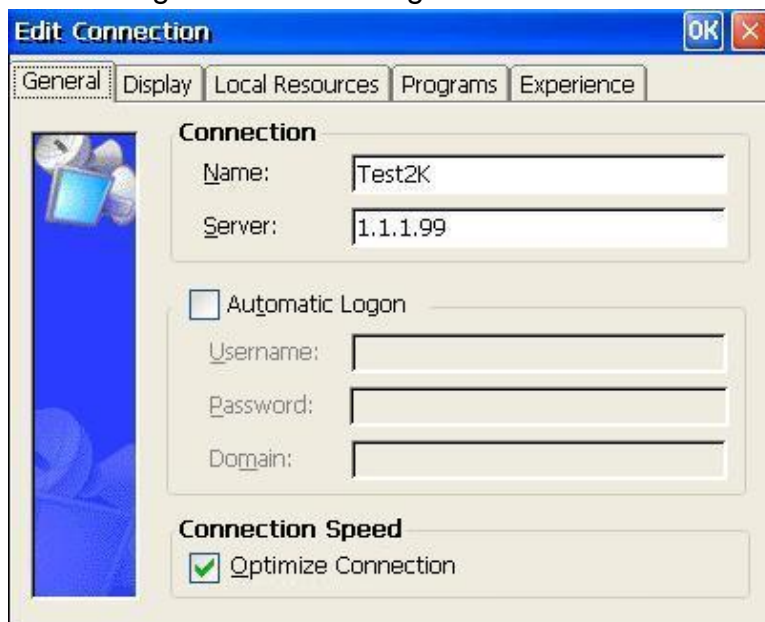


## Configure an existing connection

You may edit the pre-made connection, by selecting the [**Configure**]. Once you are in the configure tab select a connection name which needed to be modify then click on [**Edit**]. Let's use RDP connection for example.



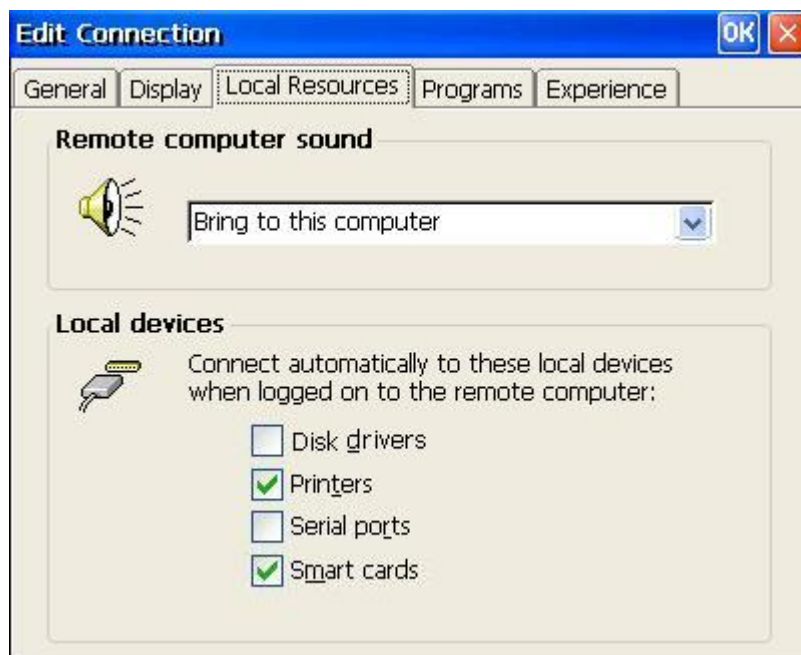
The first option you are allowed to modify will be the [**General**] tab. Under this tab you are allowed to change the connection name and the server IP address. [**Automatic Logon**] may also be changed or leave untouched by unselecting the Automatic logon box.



The numbers of color can be edited by selecting the second tab called **[Display]**. Please note that the settings on the remote server might override this setting.

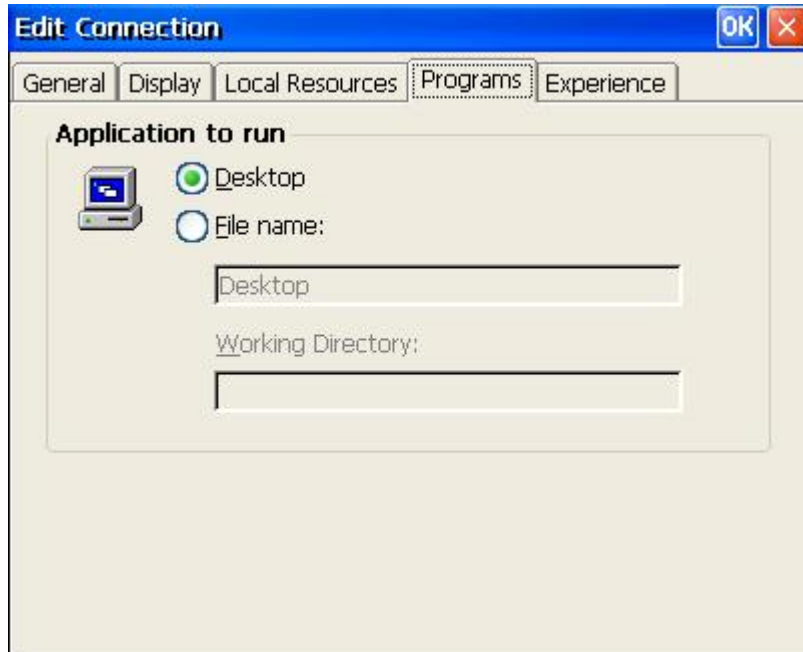


**[Local Resources]** enables the remote server to use the resource from ThinClient. One of the options is the sound option. Remote computer sound can be either played at remote server or at the local ThinClient (if speaker is connected). Second option allows disk mapping. All local devices such as Disk drives, Printers, Serial ports, and Smart cards can be mapped to the server and be used.

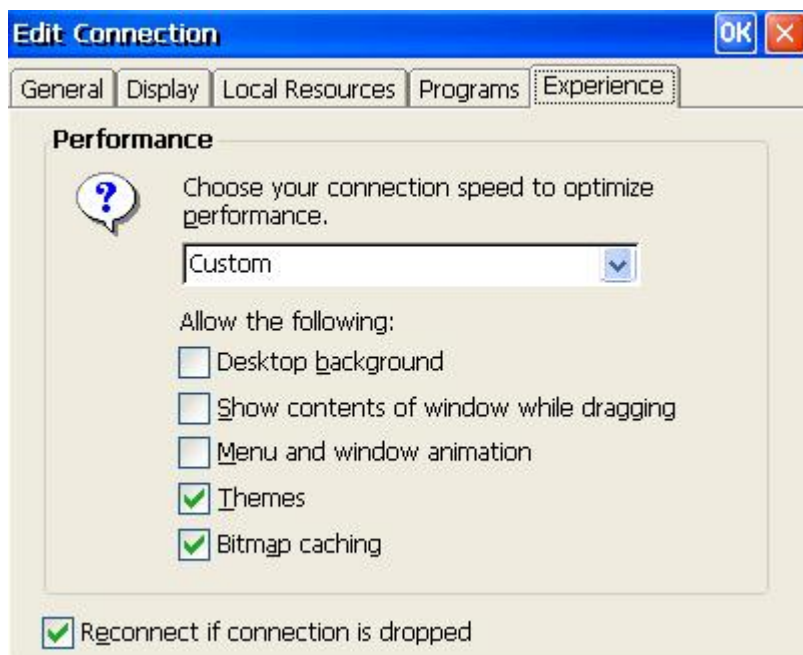


[**Programs**] tab, allows startup application be changed. The two options are:  
On connect, desktop will be at displayed.

On connect, the specified program will be run. Please always remember to specify the directory the program is located under.

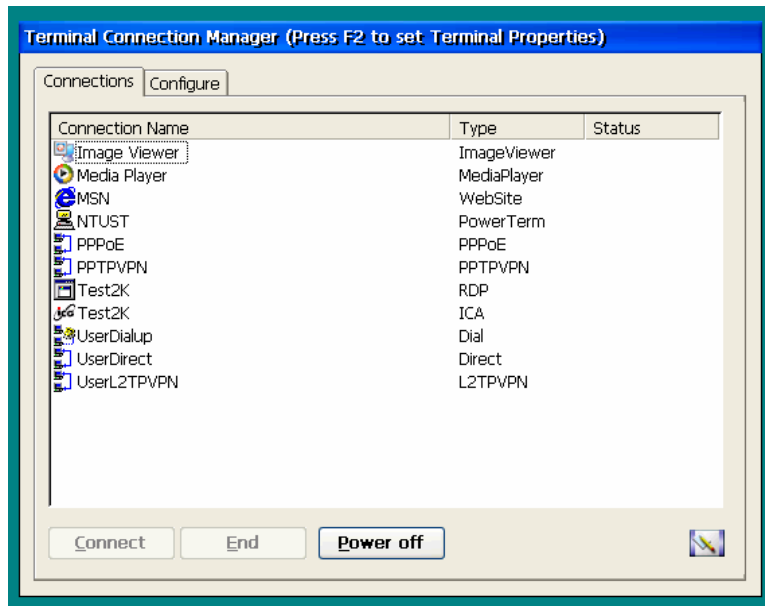


The speed of connection can be modified on the [**Experience**] tab. The amount of network bandwidth required is depended on the number of desktop effect selected. More options selected will consume greater network bandwidth.



## Connecting to a server

To establish connection is simple on the ThinClient. First select the **[Connections]** tab on the Terminal Connection Manager and double click on a pre-made connection to connect.



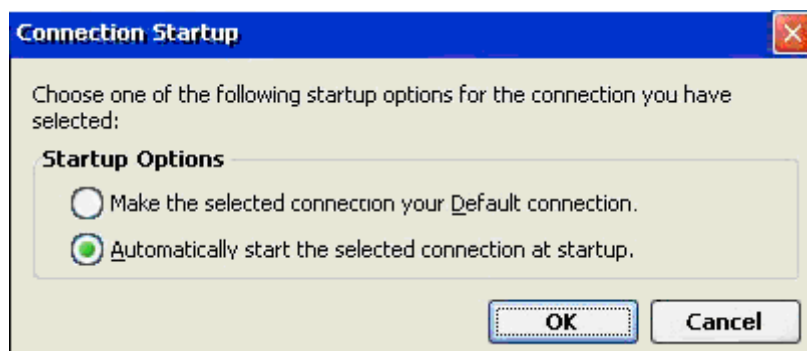
The list view allows the user to view and select connections for the purpose of adding, editing, deleting, or specifying the startup behavior of a connection. If a user double-clicks on a connection in the **“Connection Name”** column, the effect is the same as selecting a connection and pressing the **“Edit”** button. Highlighting a connection and pressing the Enter key also has the same effect as double-click.

## Auto Connecting

The Startup button allows the user to specify the startup behavior of a connection. A connection's startup behavior can be either "**Default**" or "**Autostart**". If a connection has been specified Default, it will be pre-selected in the list view when the shell starts up so that the user need only press the Enter key once to startup the connection. If the connection has been specified as Autostart, the behavior is the same as specifying a connection as Default with the one exception being that the shell will automatically start the connection process instead of requiring that the user press the Enter key. If a user does not select a Default connection, the first connection in the list will be specified as the Default connection.

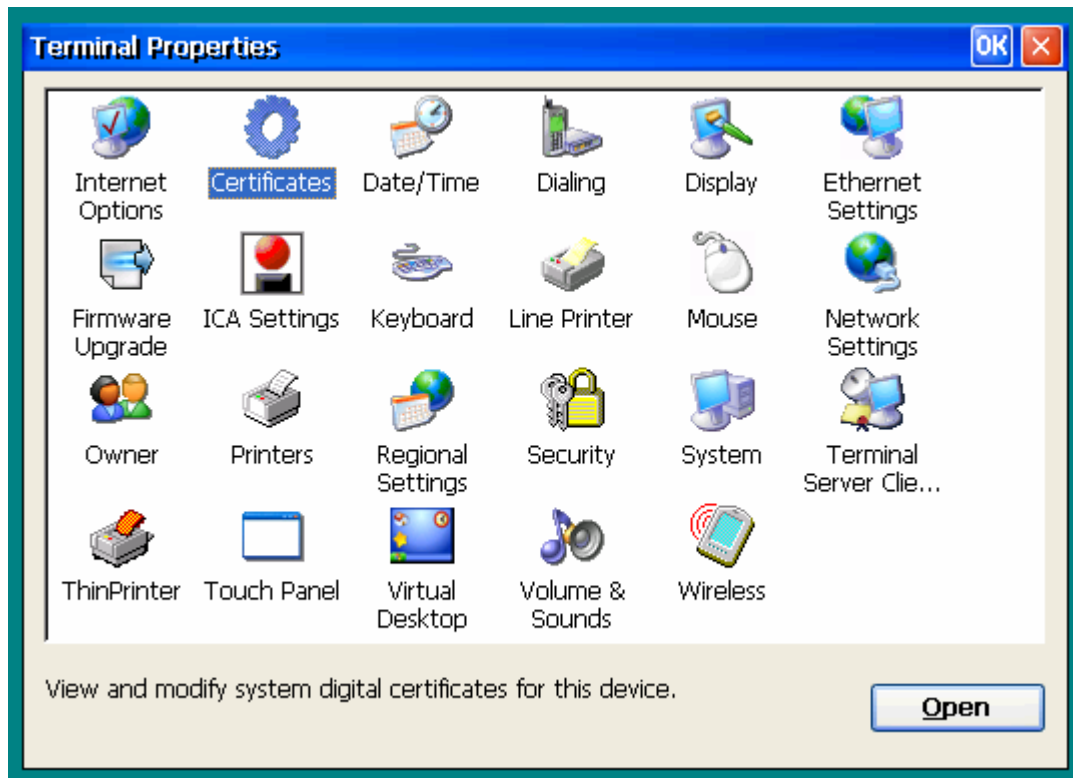
To enable Auto start on a pre-made connection:

1. Select the [**Configure**] Tab
2. Select a pre-made connection.
3. Click on [**Startup..**] and the following will appear



## Changing the Terminal Properties

This chapter explains how to change the Terminal Properties using the Terminal Properties dialog box. Invoke the Terminal Properties dialog box by press “F2” key, or click the properties button located on right-bottom of Terminal Connection Manager while Terminal Connection Manager is the most front window.

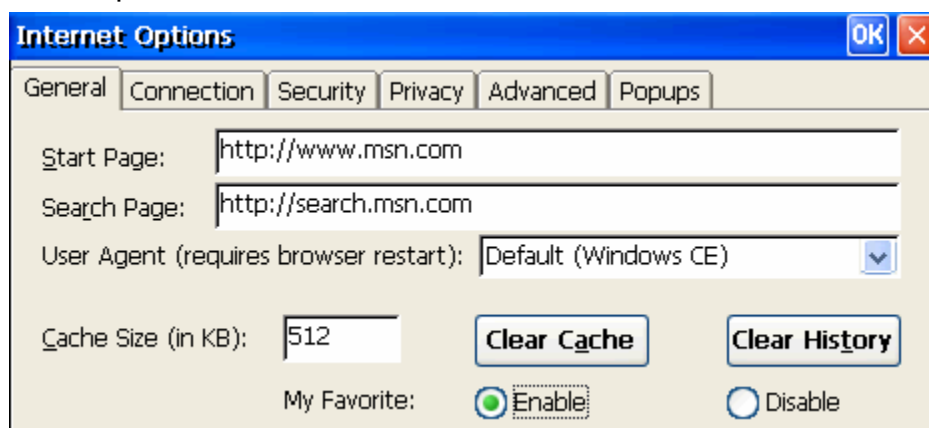


## Internet Option

This Control Panel component opens the Internet **Properties** dialog box, where Internet properties can be changed. These properties are organized under five tabs: **General**, **Security**, **Privacy**, **Connections**, **Advanced**, and **Pop-ups**.

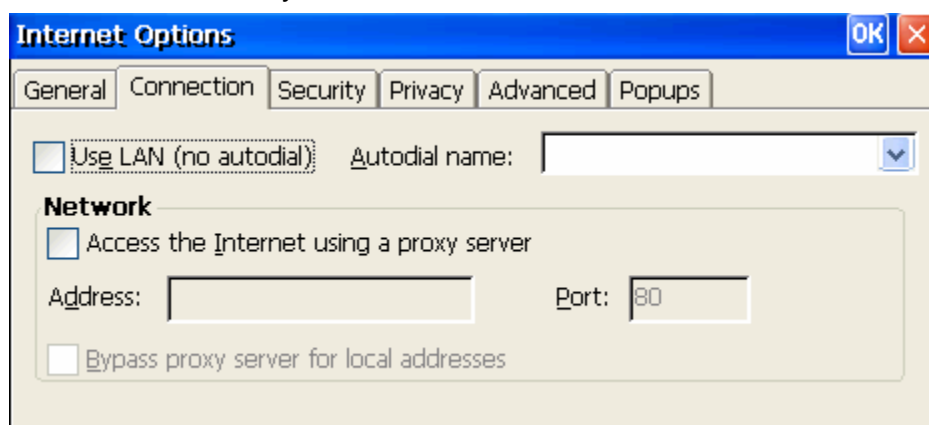
### General

Starting page, default search page and History cache can all be set under this menu option. My Favorite link can also be disabled and enable under this menu option.



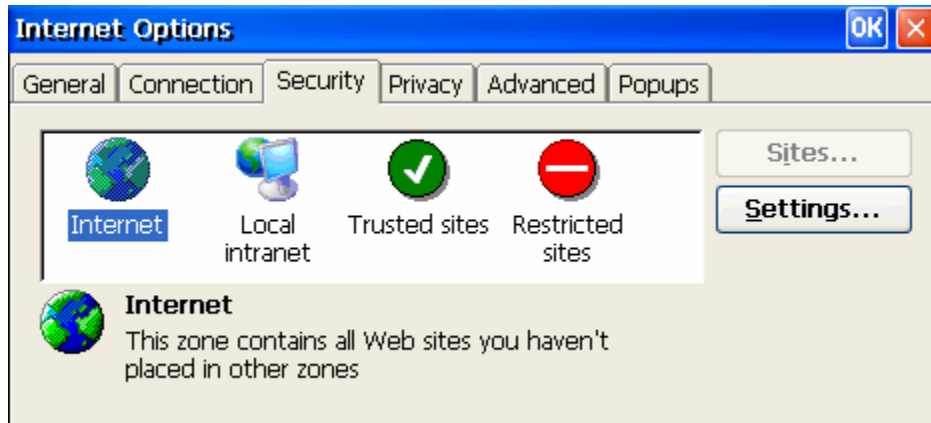
### Connection

The connection tab is mostly important for configure proxy settings. If your network requires all out going connections to go through a proxy server first then here is where you can set it.



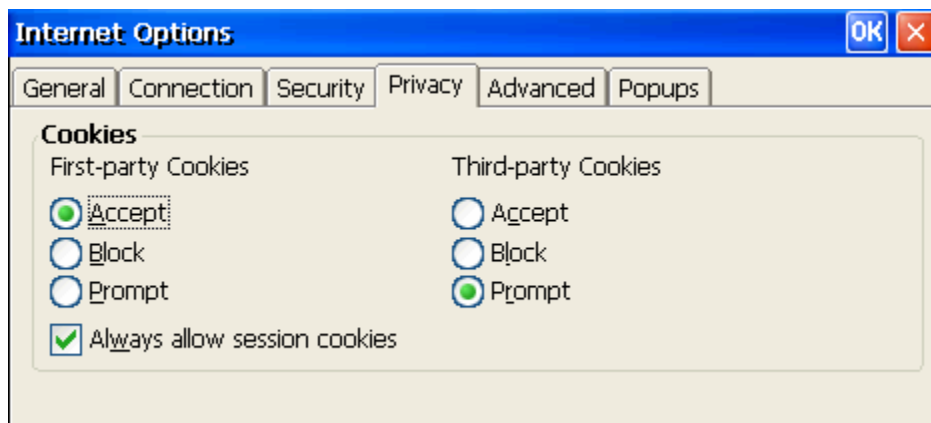
## Security

The security tab is where user configures the trusted sites and restricted sites on Internet Explorer Browser. The additional ActiveX and plug-ins can be found under the settings button.



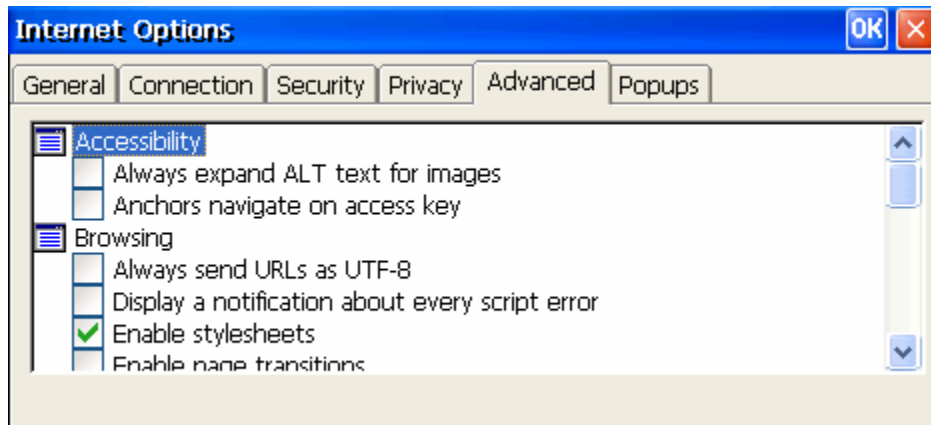
## Privacy

Privacy tab contain the cookie settings. This where cookies can be disabled if needed.



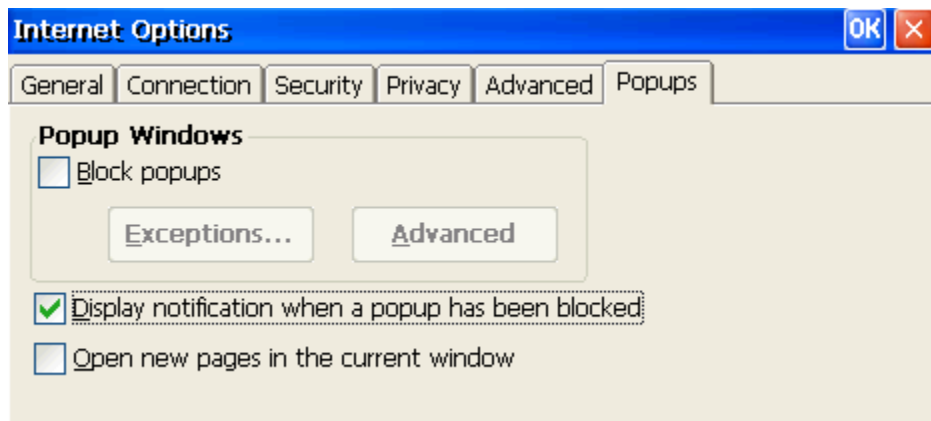
## Advanced

The advanced tab consists of Accessibility, Browsing, multimedia, Security. If you are new to Thinclient or you don't understand the content at which it contains you should leave this part alone.



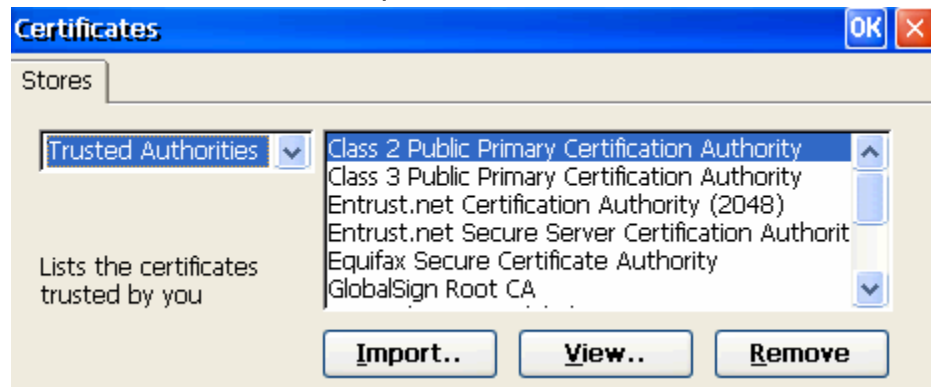
## Pop-ups

With pop-ups enabled all pop up window from a web site will be automatically blocked.



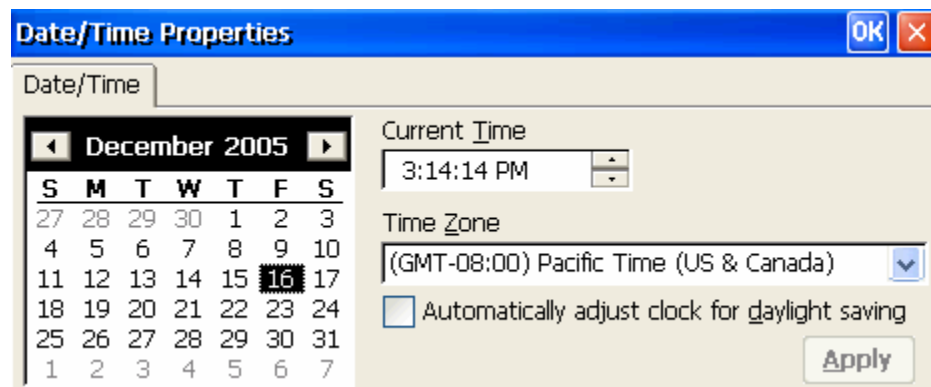
## Certificates

Allows you to manage certificates, trusted certificates can be imported or deleted under this menu option.



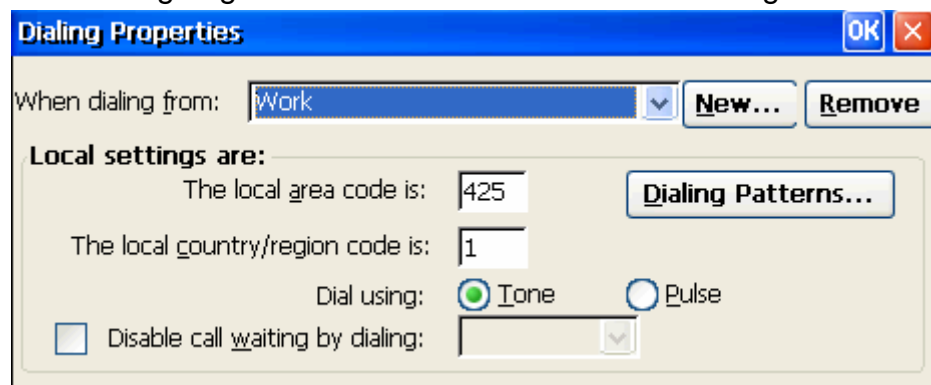
## Date/Time

The current time, date and time zone can be set under this menu option. Daylight saving can be enabled here, to fit your time zone.



## Dialing Properties

Dialing properties allows user to configure or add the “calling from” properties. New calling origin can be added to make future dialing easier.

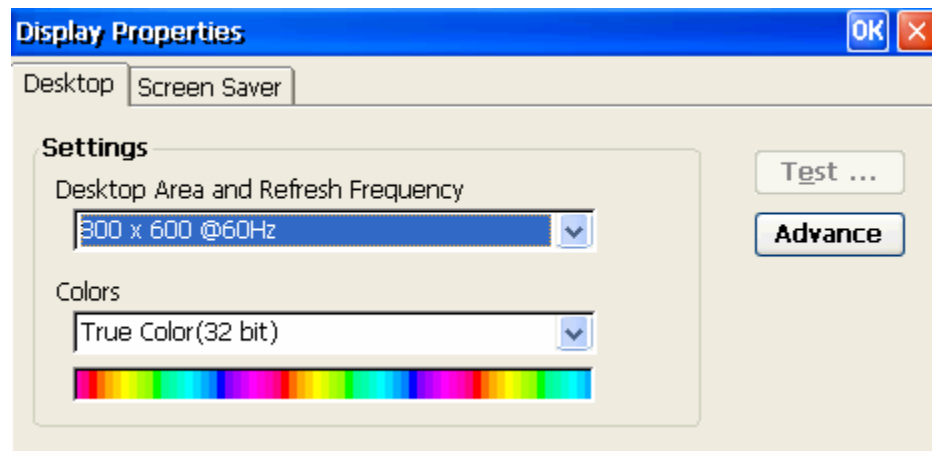


## Display

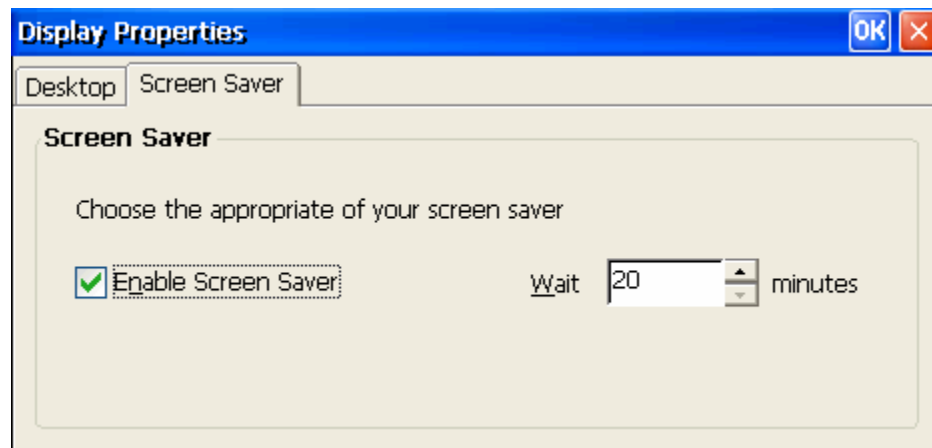
There are two major functions under the display menu option. One is desktop and the second one will be Screen Saver. For Detail information please refer to below.

1. **Desktop**, allows you to change the desktop area and the refresh frequency. Please note that for most standard LCD's desktop area will be at 1024 x 768. The default color will be True Color (32 bit).

**Caution: be sure to click on test before you click on ok.**



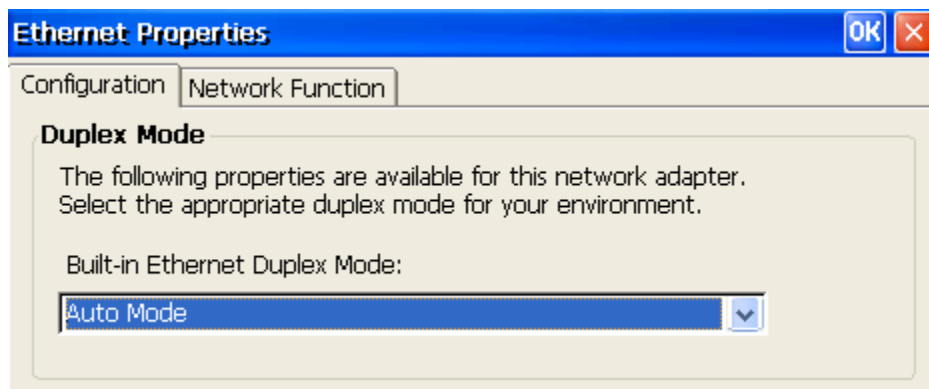
2. **Screen Saver**, enable and disable screen saver. Specifies the idle time must elapse before the selected screen saver is displayed.



## Ethernet Properties

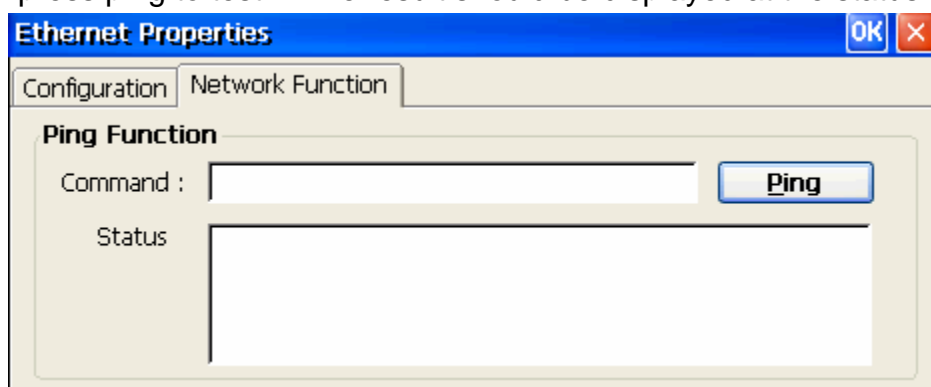
The network properties tab will allow user to test and adjust network connections. Within there are 2 tabs one is configuration tab and the other will be network function tab. The detail of each will be explained at the following.

1. Configuration, allows adjusting network adaptor's duplex mode. By default it should be set at "auto detect".



2. Network Function is made up by the ping command. Ping can be used, whenever a user is in doubt of whether or not there is a network connection.

In place, next to command, key in the IP address of the destination and press ping to test. The result should be displayed at the status box.



## Firmware

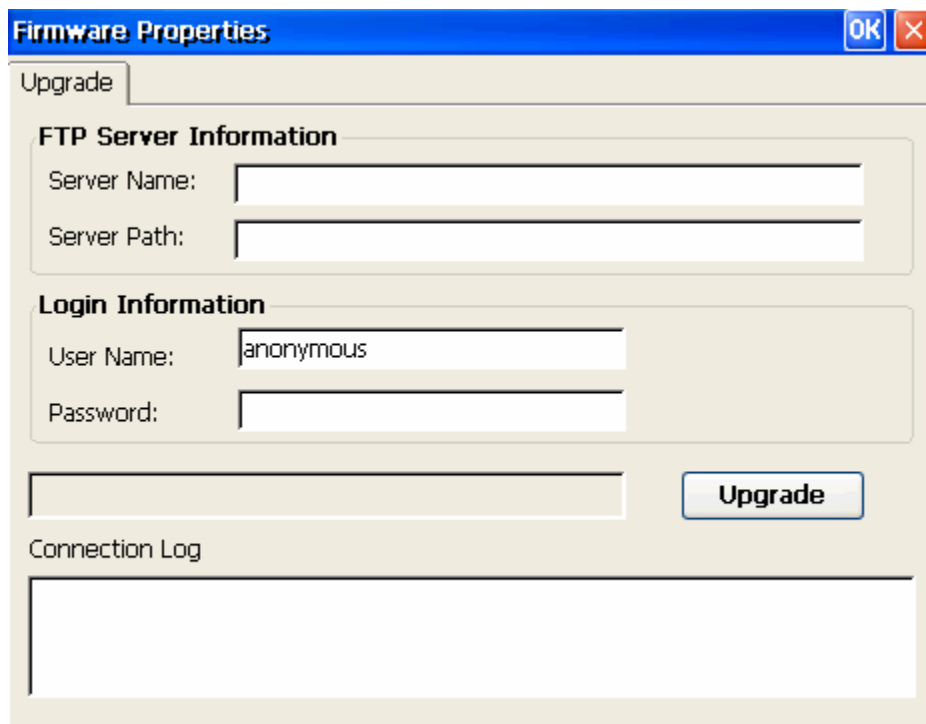
Firmware Properties page allows you to upgrade firmware using a FTP server, in which firmware is downloaded to ThinClient from your FTP server. You must

fill out the FTP server information and Login information in the Firmware Properties page in order to start downloading the firmware image.

**Notice:** The upgrade process cannot be cancelled once you have started upgrading. ThinClient must be restarted for changes to take effect. The created connection items remain no change and Terminal Properties are reset to the factory defaults settings during the upgrade process.

Following are the steps for upgrading the firmware:

1. Click **“Upgrade”** button to start firmware downloading. After image download finished, a dialog will popup for you to confirm update.
2. Fill in the server name and the server path that you are upgrading to and click the upgrade icon.
3. To confirm upgrade firmware click **“Yes”** button on the dialog box or Click **“No”** button to cancel upgrading.
4. Upgrade process completed.
5. Click **“Reboot”** button to restart the ThinClient



The screenshot shows a dialog box titled "Firmware Properties" with a blue header bar containing "OK" and "X" buttons. The "Upgrade" tab is selected. The dialog is divided into several sections:

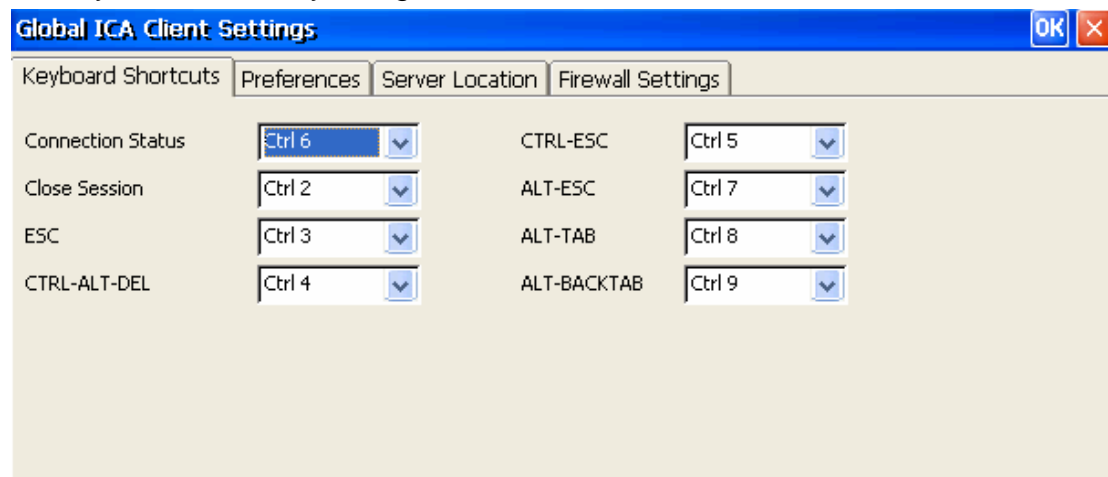
- FTP Server Information:** Contains two text input fields labeled "Server Name:" and "Server Path:".
- Login Information:** Contains two text input fields labeled "User Name:" (with "anonymous" entered) and "Password:".
- Upgrade Button:** A blue button labeled "Upgrade" is located to the right of a single-line text input field.
- Connection Log:** A large empty text area at the bottom of the dialog.

## Global ICA Client Settings

ICA's global client settings can be modified by this field. Some tools were added to ensure a more user-friendly environment. Each of the additional function will be explained in detail at the following section.

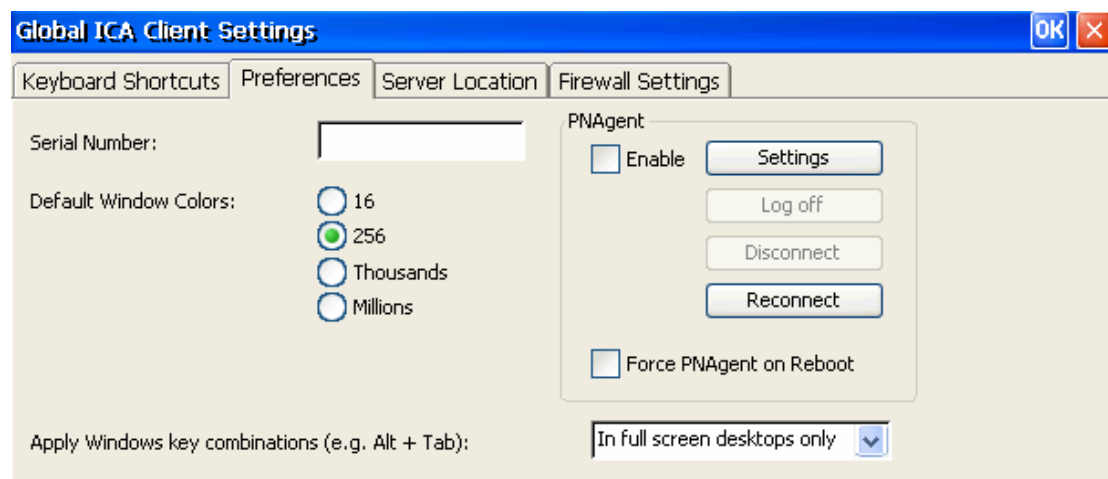
### Keyboard Shortcuts

Hotkeys can be set by using Ctrl+number.



### Preferences

At the preferences tab, users are allowed to specify at connect, the default number of colors of their desktop, enable or disable PNAgent, and the serial number of their local ThinClient.

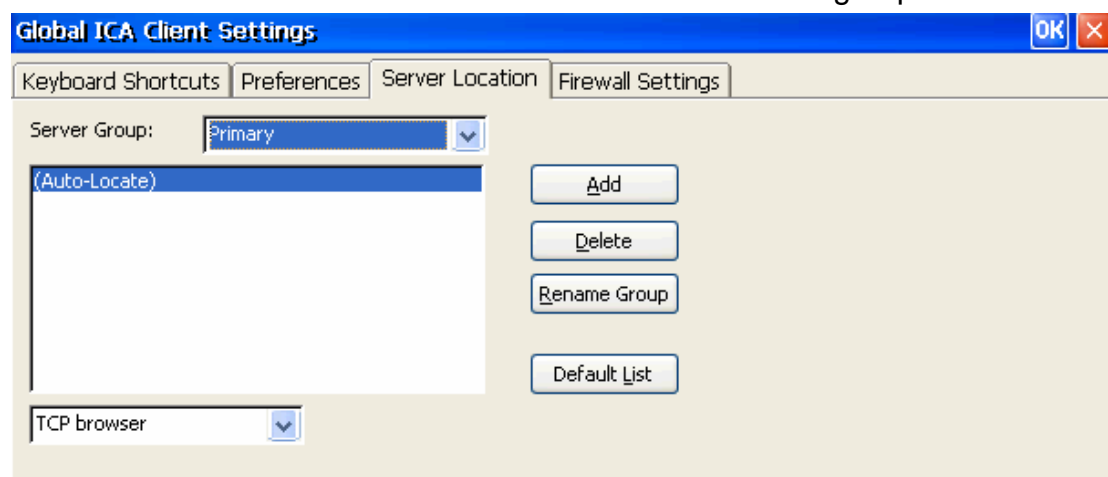


The Program Neighborhood Agent allows users to connect without using a Web browser to a server running the Web Interface and access all published applications across multiple server farms. Users do not have to manually configure a connection to each application as they do with Connection Manager. The Program Neighborhood Agent also provides single sign-on:

when users log on at the start of a session, they do not have to supply their logon credentials again during that session, even if they connect to several different applications. You can update server URLs and configure ICA session settings using the Program Neighborhood Agent, and you can also choose which, if any, of these settings your users can access and modify.

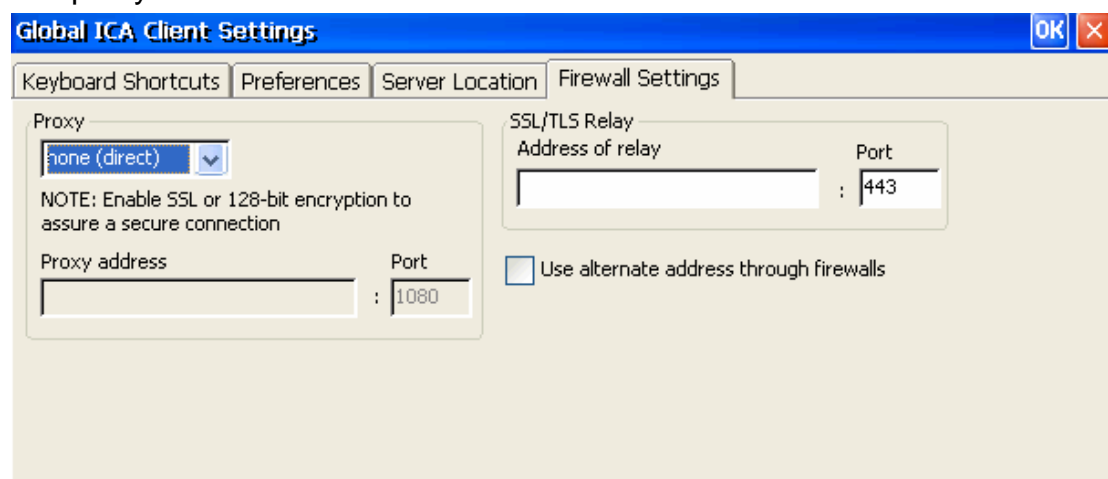
### Server Location

The location of your ICA server can be specified or by automatic search. The server location tab allows users to locate ICA servers and group them.



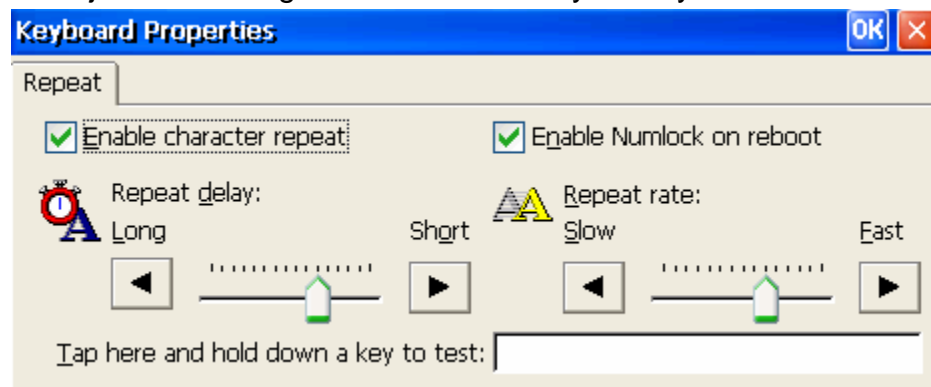
### Firewall Settings

Proxy connection method, SSL/TLS relay and proxy server can all be setup within the firewall settings. Contact your network administrator for detail setup of your network.



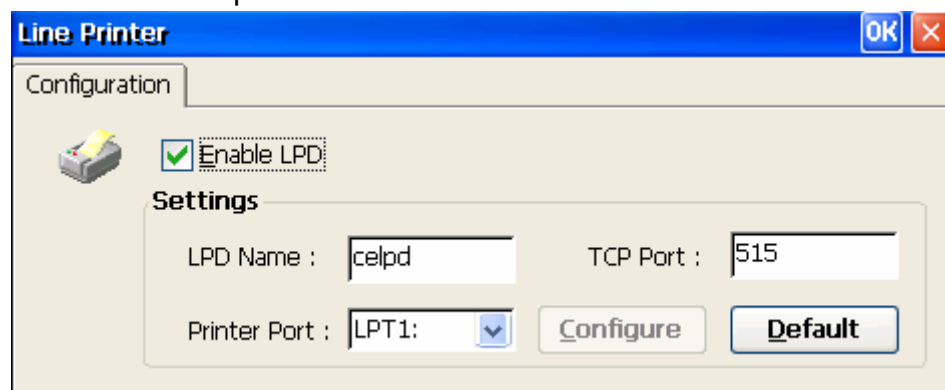
## Keyboard Properties

To adjust and configure the behavior of your keyboard



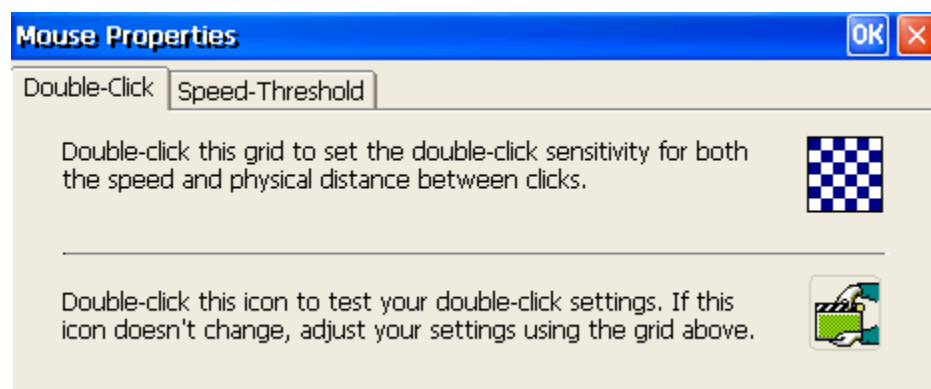
## Line Printer

To enable Thinclient's Line Printer, in another word is to use ThinClient as a printer server. Any OS with UNIX printing protocol are allowed to use ThinClient as a printer server.



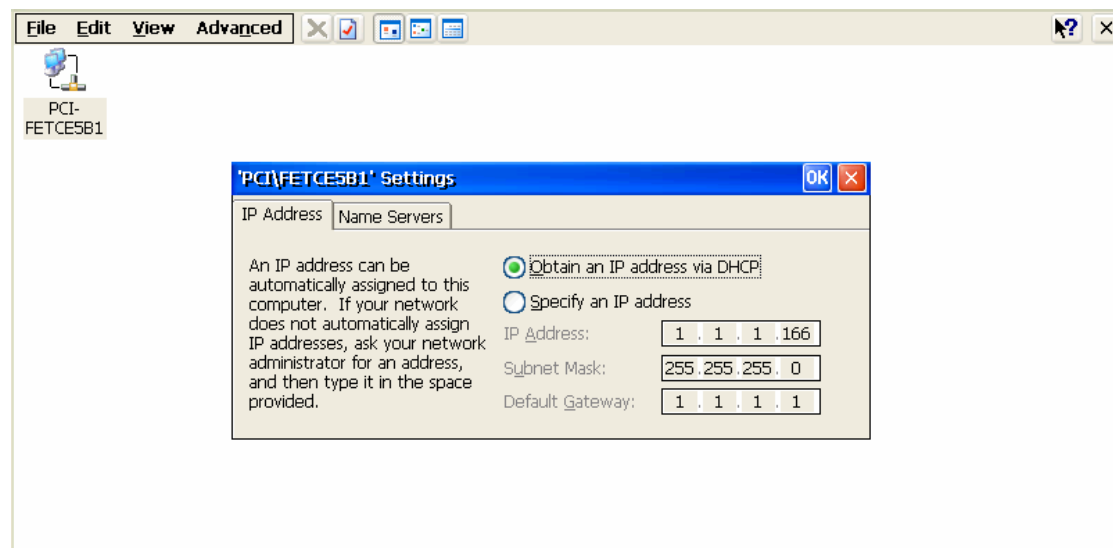
## Mouse Properties

Mouse Properties menu option allows adjusting the double click speed and mouse movement of your ThinClient.



## Network Settings

Adjust the network settings to fit your network. For detail setup please contact your network administrator for help.



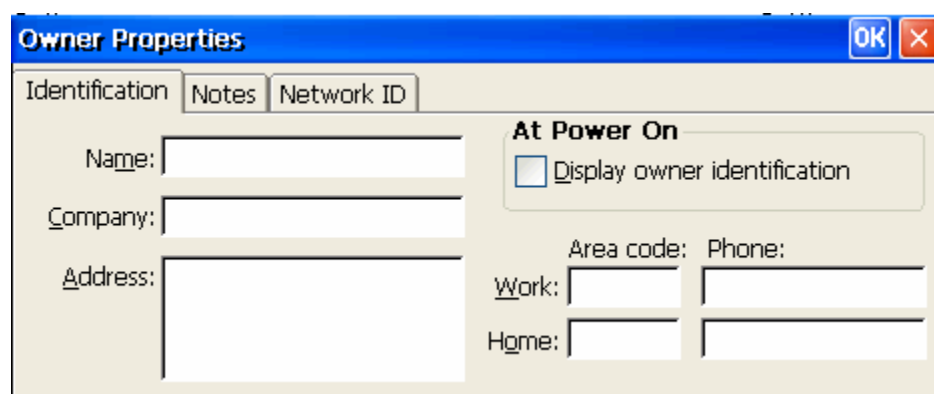
## Owner

There are 3 major functions or tab under this menu option. Identification, Notes, Network ID, all plays important role in your network connectives.

**Identification** allows you to input your company information

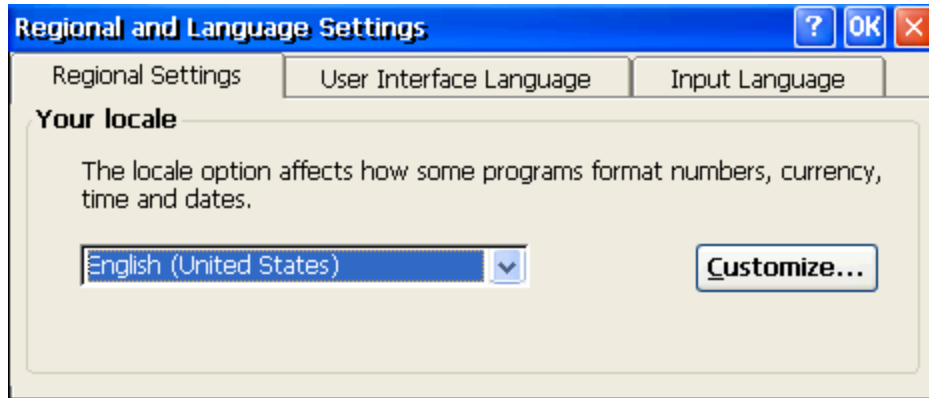
**Notes** allow you to add any additional information which is not included in the identification tab.

**Network ID** Windows CE uses this information to gain access to network resources.



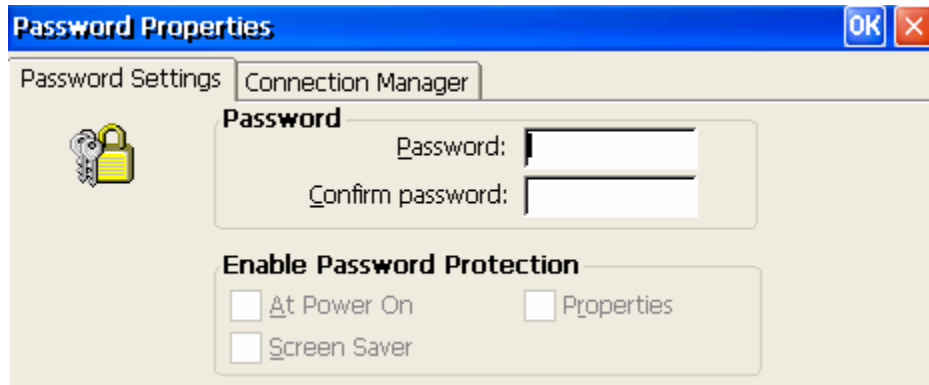
## Regional and Language Settings

The Regional and Language allows user to customize to fit their language needs.



## Security

Security setting on the menu option protects your ThinClient from unauthorized usage. You can put a password lock on your Thinclient at power on, resume of screen saver, and properties (F2).



## System Properties

System information can be obtained from the system properties menu option. The following are the tabs within the system properties.

**General** This tab contains Operation System information and the Processor type.

**Product** Product Name, Product ID (serial number), firmware version are all part of this tab.

**Memory** Adjust the memories allocation of your ThinClient. When the slider moves to the right then more memories is dedicated to programs. When the slider moves to the left then more memories is dedicated to storage.

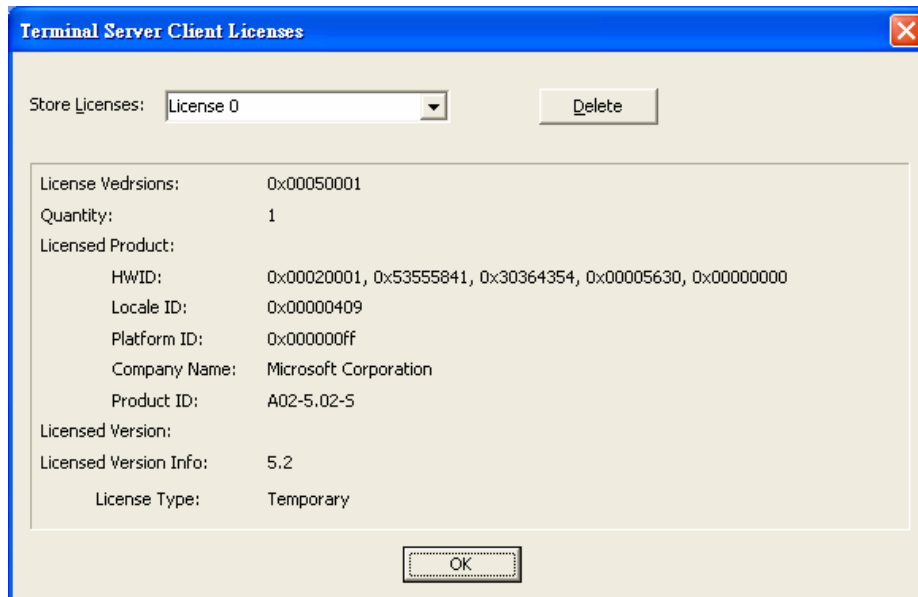
**Device Name** Used to identify your ThinClient to other computers (computer on the network).

**About** Displays the manufacture of your ThinClient.



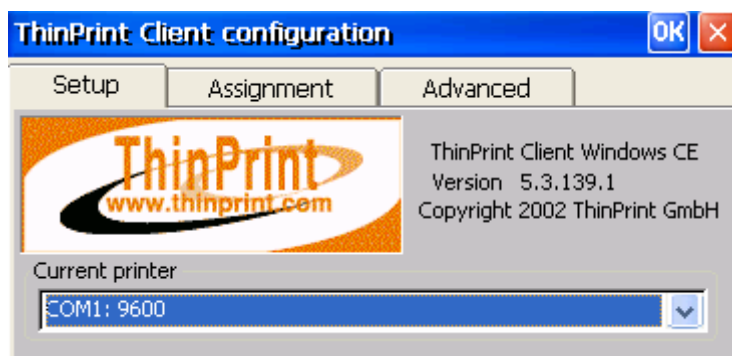
### Terminal Server Client Licenses

To view and manage the terminal client licenses that is stored on the ThinClient. These licenses are normally issued by a server that Thinclient connects to.



### ThinPrint Client Configuration

The basic of ThinPrinter can be configured under this menu option.



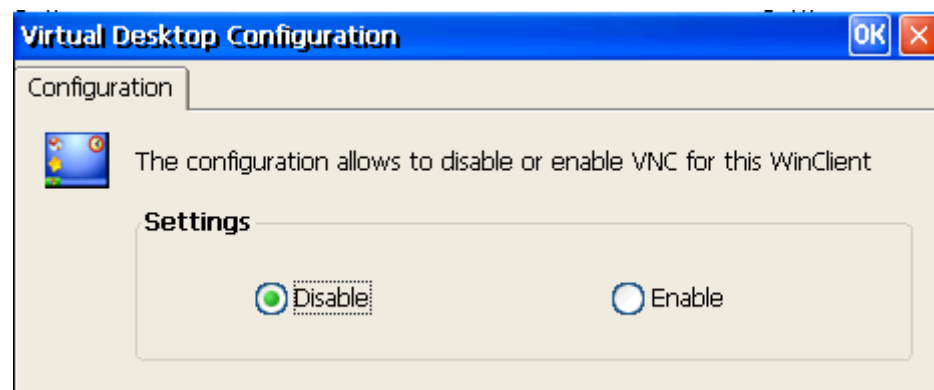
## Touch Panel Properties

Your ThinClient is compatible with few selected touch screens. The basic configuration and type selection can be found under the Touch Panel Properties. Once you have selected a touch screen and are ready to put it to use make sure you always want to calibrate it before clicking on OK.



## Virtual Desktop

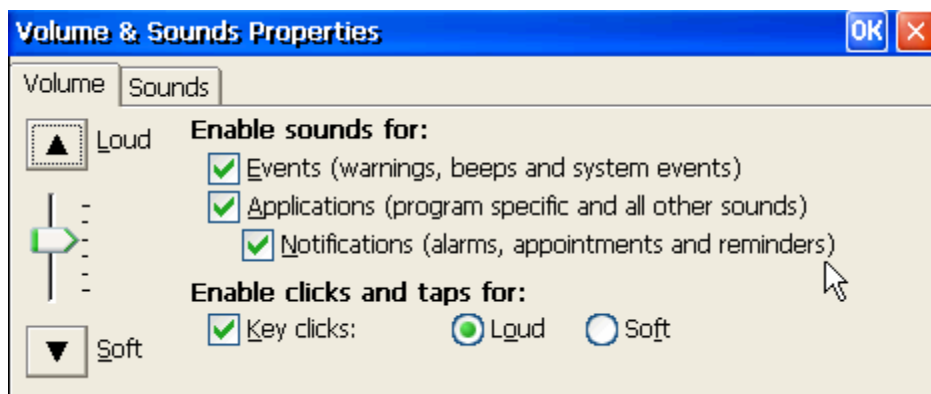
Virtual Desktop allows network administrators to monitor the activities on this particular WinClient by VNC viewer. VNC (Virtual Network Computing) Software makes it possible to view and fully-interact with one computer from any other computer or mobile device anywhere on the Internet. VNC software is cross-platform, allowing remote control between different types of computer.



The virtual desktop is disabling by default.

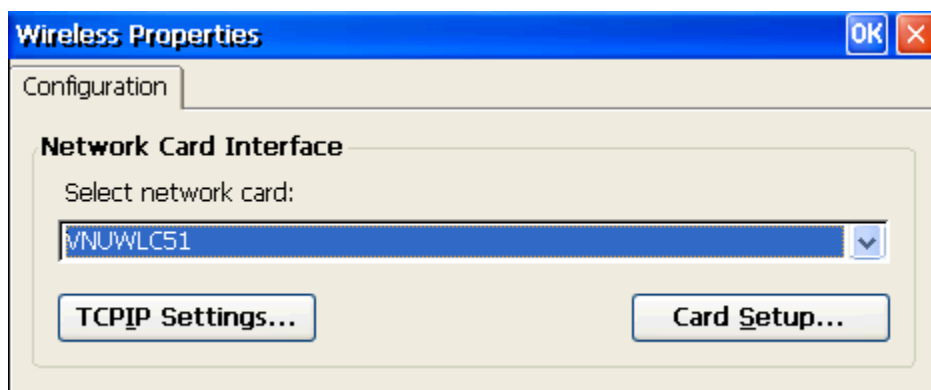
## Volume & Sound Properties

Your ThinClient is equipped with built in sound device. To configure the loudness and default built in sounds, double click on the Volume & Sound menu.



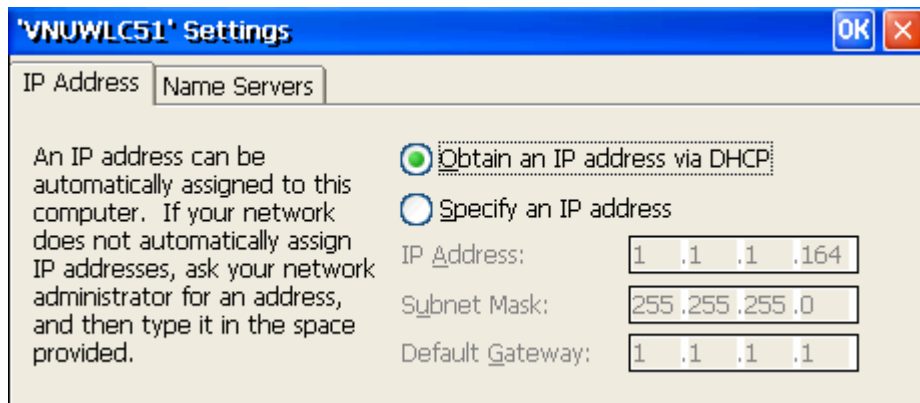
## Wireless Properties

Your ThinClient equipped with wireless LAN capability. A few selected wireless LAN will work with your ThinClient.



### TCP/IP Settings for Wireless LAN

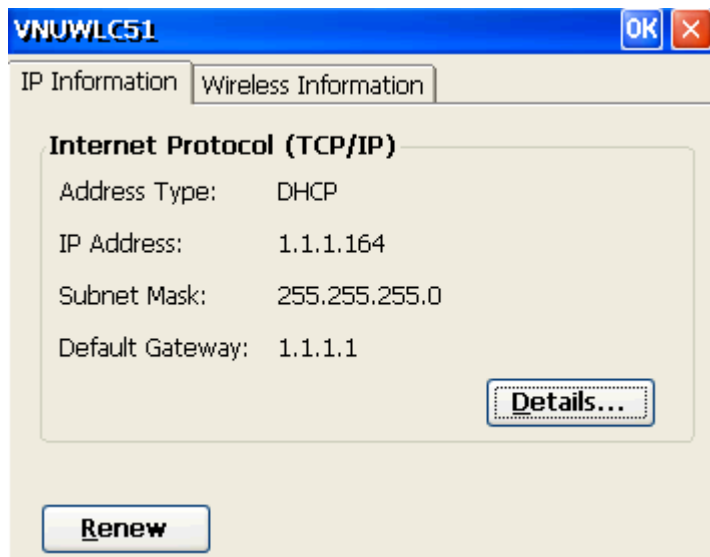
Your wireless LAN TCP/IP setup is located under wireless LAN also in the Network Setting icon under the F2.



## Card Setup

Under the wireless menu and to the lower right you should see Card Setup. This function is used to configure your wireless LAN settings. Within the Card Setup there should be 2 sub menu or tabs. They are IP Information and Wireless Information. For detail explanation of each function, refer to the following and you can select the appropriate access point to for connecting.

**IP Information** displayed the current IP information of your wireless such as: Address Type, IP Address, Subnet Mask and Default Gateway.



**Wireless Information** enable user to select a network to connect.

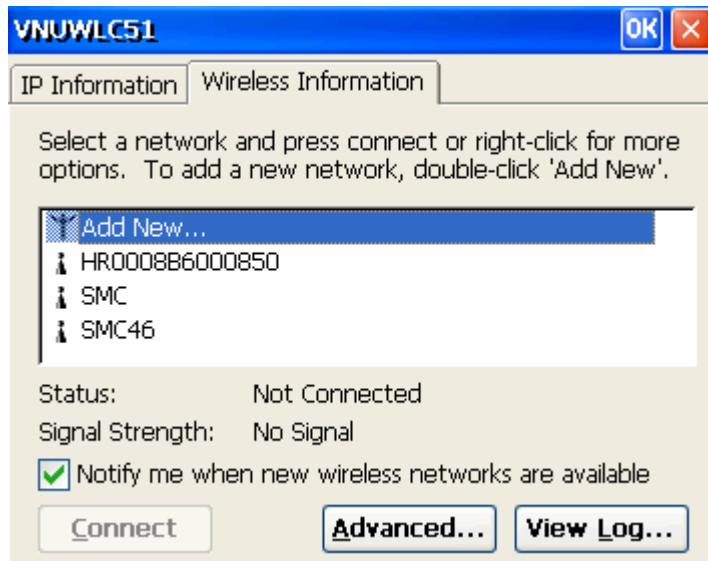
The main window will display the searched network, and user selects a favorite one and press Connect button or right-click for more options like encryption settings. To add a new network, double-click 'Add New'.

This page consist of Connect, Advanced and View Log functions.

Connect: Press Connect when you select your favorite network.

Advanced: Windows will connect to the available networks; preference will be given to networks at the top of this list.

View Log: List the wireless networking log.



## Slave Smart Card for ThinClient

This chapter describes how to use the Smart Card on ThinClients which support smart card features. Smart card reader has been built onto Thin Client series and with its convenient function of “Mobile Connections” and advanced security features, users are able to operate ThinClient anywhere by inserting the smart card which is stored with their own connections. Such function is specially designed for users who have to share thin-client with others.

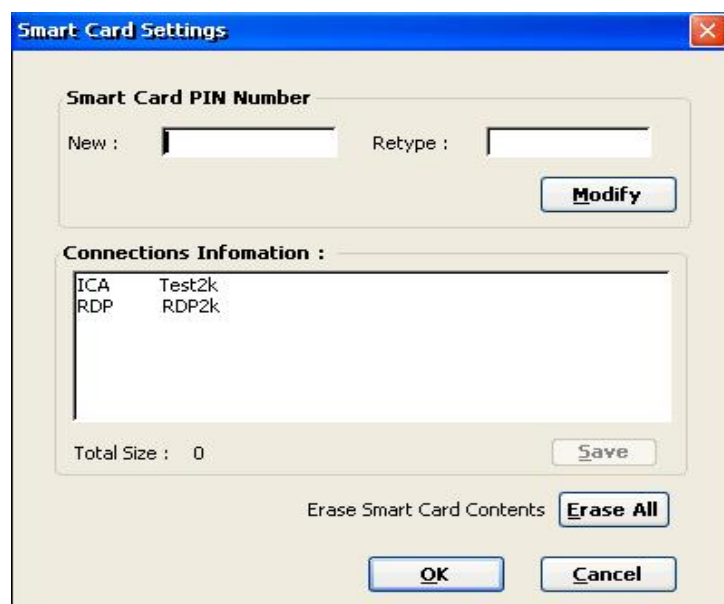
### Smart Card Features:

- PIN number is encrypted to the smart card based on the **DES** (Data Encryption Standard).
- The smart card follows ISO-7816-4 standard
- Flexible Mobile connections
- More Security & More Convenient

### How to Use the Slave Smart Card on Thin Client

Login with NEW Slave Smart Card

Pin number will need to be changed at the first usage of the smart card for security reasons. Pin number can not exceed 8 characters by default the pin number is “11111111”.

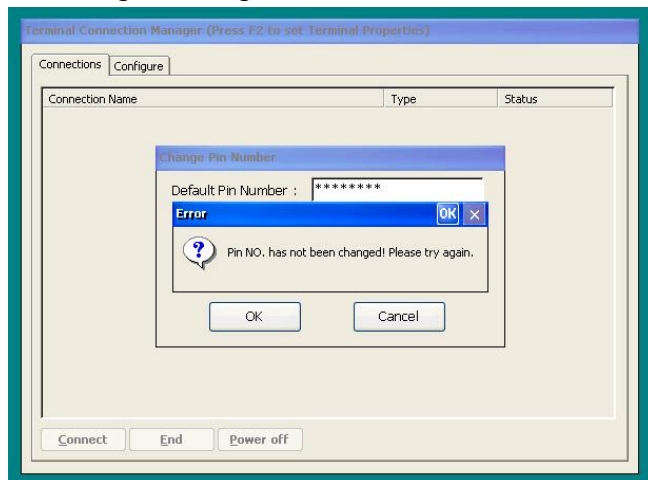


The image shows a screenshot of the "Smart Card Settings" dialog box. The dialog has a blue title bar with the text "Smart Card Settings" and a close button (X) in the top right corner. The main content area is light beige and contains the following elements:

- Smart Card PIN Number**: A section with two input fields labeled "New :" and "Retype :". A "Modify" button is located to the right of the "Retype" field.
- Connections Information**: A section with a list box containing two entries: "ICA Test2k" and "RDP RDP2k". Below the list box, it says "Total Size : 0". A "Save" button is located to the right of the list box.
- Erase Smart Card Contents**: A section with an "Erase All" button.
- Buttons**: "OK" and "Cancel" buttons are located at the bottom of the dialog.

## Change to a New Pin Number

You must type in the new digit that you wish to change to on the New Pin Number column, and then re-type it to verify on the Confirm Pin Number column. Both numbers must be identical or the system will provide you with the following message.



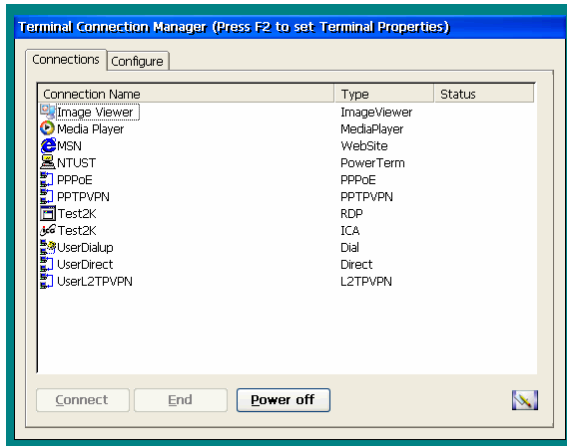
## Using smart card on a ThinClient with existing connection

The original connection will be hidden on the ThinClient when smart card is inserted on a ThinClient with residing connection.

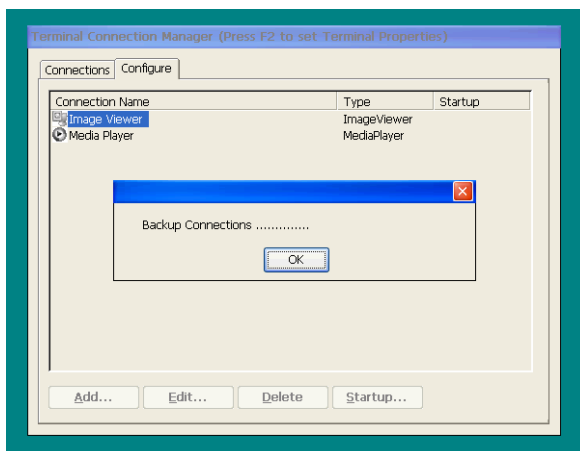
The following method is for using a smart card with exiting connection on the ThinClient.

### Insert the smart card into Thin Client at **POWER-ON** state.

1. Please close all running sessions on ThinClient before the smart card is inserted.
2. The color of the window of **Connection Manager** will turn gray. Then a message saying “backup connections” will appear. This means ThinClient is hiding the original connections

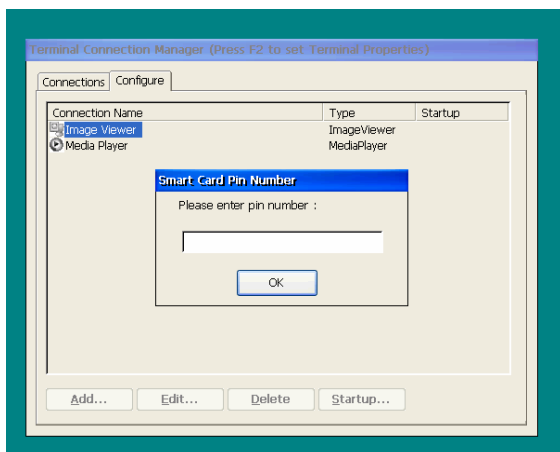


**Original Connections**



**Process of hiding connection**

3. PIN Number authentication dialog box will popup after the original connections is successfully hidden. Enter the default PIN Number to login the system.



**Notice:** The smart card will be locked after three invalid entries. Contact your administrator if the smart card is locked.

4. The connections of smart card will be loaded to system after passing the authentication.
5. Users can now **“Add”**, **“Edit”**, **“Delete”** or **“Connect”**.

## Using Smart Card at power on

### Insert the smart card to Thin Client on POWER-OFF status.

1. Insert the smart card to Thin Client then power-on the system.
2. After passing the authentication, the connections of smart card will be loaded to system.
3. Now you can add connections, delete connections, connect to a server by using smart card.

**Notice:** The smart card will be locked after three invalid entries. Contact with administrator if the smart card is locked.

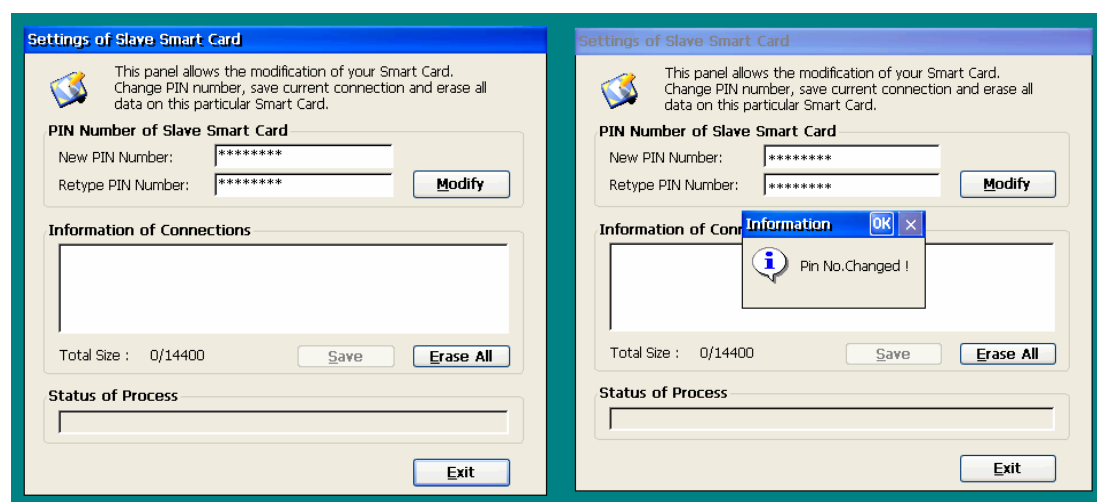
## Terminal Smart Card Properties

There are three sections **Smart Card Pin Number**, **Connections Information** and **“Erase Smart Card Contents”** in the smart card properties dialog box.

### Smart Card Pin Number

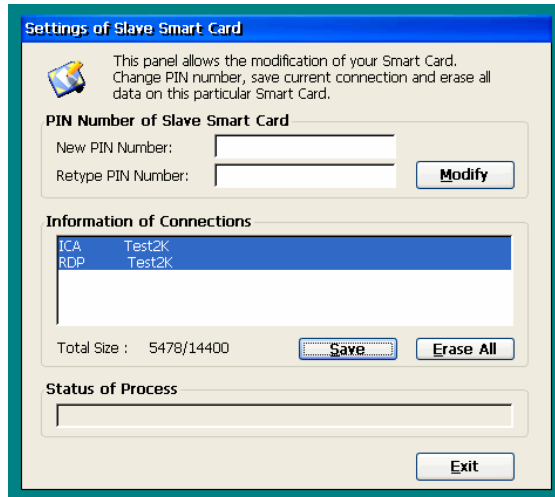
Smart card Pin number function enables users to modify their pin number on the smart card.

1. Into the Smart Card Pin Number section, enter the **“New Pin Number”** & Retype **“New Pin Number”**.
2. Press the **“Modify”** button
3. Wait for Modify completed messages appear.

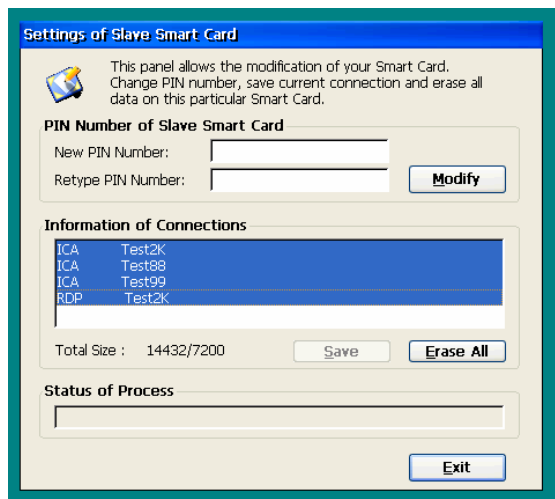


## Connection Information

In the connections information section select the connections which you want to save to smart card then click on save.



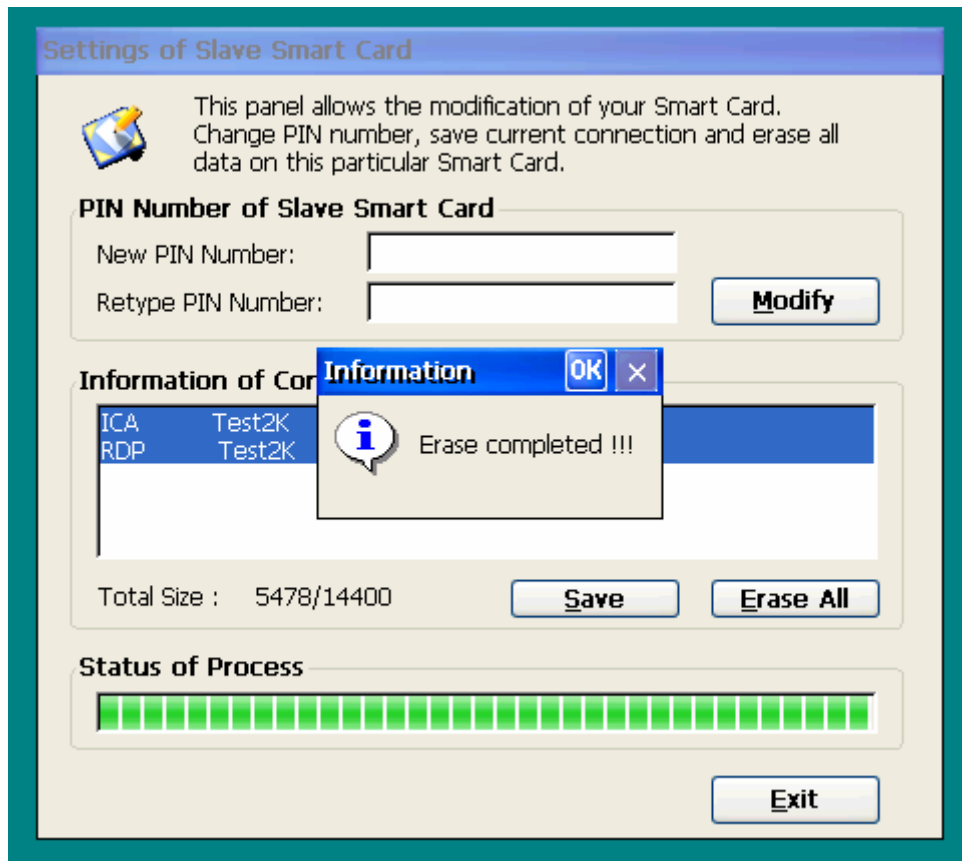
**Notice:** The “**Total size**” indicates the total size of the selected connections. There are two kinds of smartcard supported, which are 8KB size and 16K size. If your card is 8KB size, the total size can not exceed to 7KB; if your card is 16KB size, the total size can not exceed to 15KB. For instance, if your card is 8KB size, and the total size, for example as follow “14432”, has exceeded 7KB, the “Save” button will disabled, unselect the connections and keep the total size within 7KB then save again.



After completed the save procedure, you can pull the smart card out of ThinClient.

## Erasing Smart card contents

Smart Card Contents can be erased by press “**Erase All**” button in the erase smart card section. All the contents of smart card will be deleted. If only a few connections is wish to be deleted, then select the ones you wish to keep then click on save. All unwanted connection will be deleted.



## BIOS Upgrade

This function is used to upgrade BIOS. To upgrade BIOS, follow the steps below.

- 1 Connect USB floppy to WinClient and put the disk included BIOS image file.
- 2 Power on WinClient.
- 3 When BIOS information appears, press "ALT+F2", the upgrading utility will be appears, and it will search BIOS image from USB floppy automatically. If the image file is searched, the utility starts to upgrade BIOS.
- 4 After finishing to upgrade, the system will reboot automatically, press "DEL" to enter BIOS menu when reboot. Go to "Load Optimized Defaults" and enter "Y" to restore default settings, and press F10 to save the settings and quit.

\*Note: Do not remove USB floppy during upgrading progress.

## Operation System Recovery

In TC620/820 series, you can recover operation system by using USB Disk or USB CD-ROM.

Follow the steps to recovery your WinClient as below

- 1 Prepare recovery tool, USB Disk or USB CD-ROM, You can create those recovery tools by WinClient Remote Manager. For more detail, please refer to WinClient Remote Manager Guide.
- 2 Connect to WinClient.
- 3 Power on WinClient.
- 4 The utility will start to recover your WinClient automatically.
- 5 After finishing recovering, please remove recovery tool and reboot.

Note: The recovery speed can be enhanced by setting BIOS. Please follow the steps as below:

- 1 Power on WinClient.
- 2 Press "DEL" to enter BIOS menu.
- 3 Go to Integrated Peripherals → VIA OnChip PCI Device.
- 4 Set USB Ram Allocate to "Shadow".

Note: Please restore this setting to "Ram Base" after finishing recovering.