

AXUS TC600/TC810 XPe/CE.NET Specification



AXUS Thin Clients - The Flexible Solution

HARDWARE

PART NUMBER	TC-600 XPe	TC-600 CE	TC-810 XPe	TC-810 CE
Panel Type	—		TFT Color LCD Panel	
CPU	VIA Eden 800MHz	VIA Eden 533 MHz	VIA Eden 533 MHz	VIA Eden 533 MHz
RAM	256MB (Up to 512MB)	64MB (Up to 512MB)	256MB (Up to 512MB)	64MB (Up to 512MB)
Flash Memory	Support DOM/DOC/CF			
Video	Up to 1600x1200 16 bit high color		Up to 1024x768 32 bit true color	
Audio	1/8inches mini, full 16bit stereo, 44KHz sample rate		2*1 Watts speakers with Amplifier	
Networking	10/100BaseT fast Ethernet, PXE supported			
Serial	RS232 DSUB 9-Pin COM1, COM2		RS232 DSUB 9-Pin COM1	
Parallel	DSUB 25-Pin			
USB	2 USB ports			
PS/2	1 Keyboard / 1 Mouse			
PCMCIA	Optional IEEE802.11b Wireless LAN			
Smart Card Reader	Optional			
Dimension	220 mm(H) x 45 mm(W) x 155 mm(D)		331 mm(H) x 362 mm(W) x 175 mm(D)	
Connector	2 Pin Jack 5V DC.		2 Pin Jack 12V DC.	
AC/DC Adapter	Input AC 100/240 Volt, 50~60Hz / Output 5VDC, 3A		Input AC 100/240 Volt, 50~60Hz / Output 12VDC, 4.16A	

SOFTWARE

PART NUMBER	TC-600 XPe	TC-600 CE	TC-810 XPe	TC-810 CE
Operating System	Windows XPe	Windows CE	Windows XPe	Windows CE
Client Software	ICA / RDP			
Windows Media Player	Included			
Web Browser	Included			
PLUG-INS				
Shockwave	Included	N/A	Included	N/A
Macromedia Flash	Included	N/A	Included	N/A
VNC Shadowing	Included	N/A	Included	N/A
JAVA/JVM	Optional	N/A	Optional	N/A
Adobe Acrobat Reader	Optional	N/A	Optional	N/A
Terminal Emulation (Option)	IBM: AIXterm, 3270, 5250 ; Digital: VT52, VT100, VT220, VT320, VT420, VT525 ; ANSI: ANSI-BBS, SCO-ANSI, AT386 ; Additional: Wyse (50/60), Data General D-412, Televido (TVI 925/950)			
PXE	(Realtek PXE Included)			
THINPRINT	Included			
LPD support	Print Services for Unix	Yes	Print Services for Unix	Yes
Language & Keyboard Support	English (UK & US), Czech, Danish, Dutch, Finnish, French, (Standard, Belgium, Swiss), German (Standard, IBM, Swiss), Norwegian, Portuguese, Russian, Spanish, Slovak (Standard & QWERTY), Slovenian, Swedish, Turkish Q, Turkish F, Polish, Hebrew, Italian			
Management Tool	AXUS WinClient Remote Manager			

Your Thin Client resource and OEM partner

AXUS TC600/TC810 XPe/CE.NET

- > Optimal Cost-Saving
- > Fast and Easy
- > Security
- > Wireless
- > Smart Card Reader
- > Flexible Expansions



www.axus.com.tw

*Specification subject to change without notice. All trademarks or registered trademarks are properties of their respective owners.



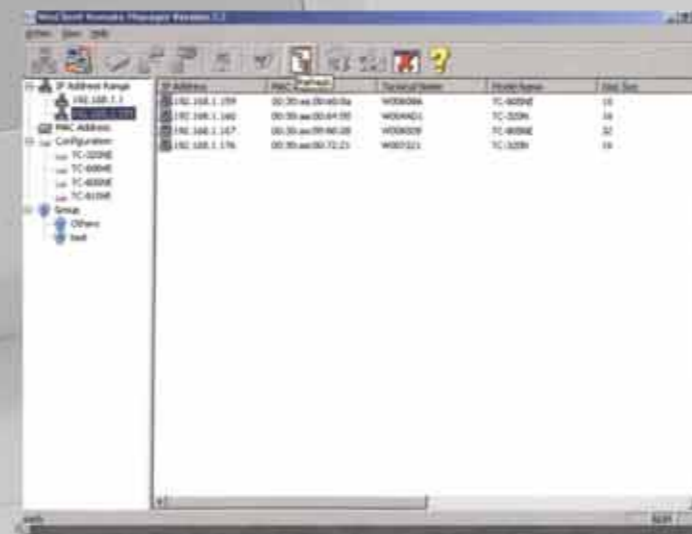
AXUS Microsystems Inc.
12F., No.800, Chung Cheng Rd., Chung Ho City Taipei Hsien, Taiwan, R.O.C.
Tel:+886-2-32348686 Fax:+886-2-32341515 Web:www.axus.com.tw

AXUS WinClient Remote Manager – Get on hand within 10 minutes

The free central management tool bundled with every AXUS TC600/TC810, is the most robust thin client tool available. Administrator can maintain and manage the TC600/TC810 remotely, effortlessly, and centrally. The friendly graphic interface enables administrators to learn the course within 10 minutes.

Key Features of AXUS WinClient Remote Manager

- Discover all TC600/TC810 on the network. Easy to manage or control the thin clients on Remote Sites.
- WRM can backup all the connections and properties from one of the clients and upload to another if necessary.
- Remotely configure client's properties and connections
- Upgrade the firmware to single/multiple TC600/TC810 unit(s) via FTP on WRM.
- Indicate the connections and properties of all the TC600/TC810 on the LAN.
- Remotely power-on/power-off the single/multiple TC600/TC810.



Your best choice ever for thin clients!

AXUS TC600 are suitable in the Microsoft Windows Terminal Server environment, as well as for use in Citrix MetaFrame, Linux-Unix-Server and even mainframe environments across a wired or wireless network. The bare-bone AXUS thin clients are also available to provide you with more flexibilities. The AXUS Thin Clients always deliver outstanding performance for any application.



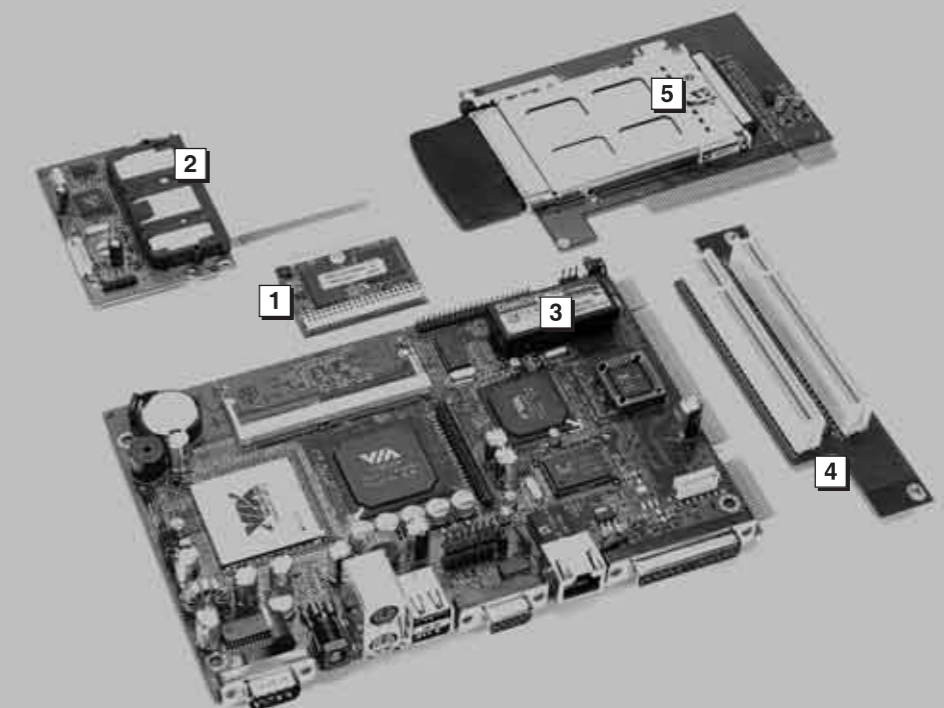
More Expansions

AXUS TC600 offers you more expansions than others, including LAN port, 2 USB ports, Audio Out/Mic In, serial, parallel, PS/2 keyboard and mouse. Plus support for PCMCIA wireless networking and smart card reader. Compact size doesn't mean to suffer any expansions.

AXUS Thin Clients
- The Flexible Solutions

AXUS
TC600 / TC810 XPe / CE.NET

- 1 DOM/CF Storage
- 2 Smart Card Reader Support
- 3 DOC Storage
- 4 PCI Riser Card
- 5 PCMCIA WLAN Support



Diverse Application for a Barebone

AXUS thin clients are ideal for a range of diverse application environments, including banks, call centers, educational institutions, hospitals, and shops etc.